



AmaZonia 5.0

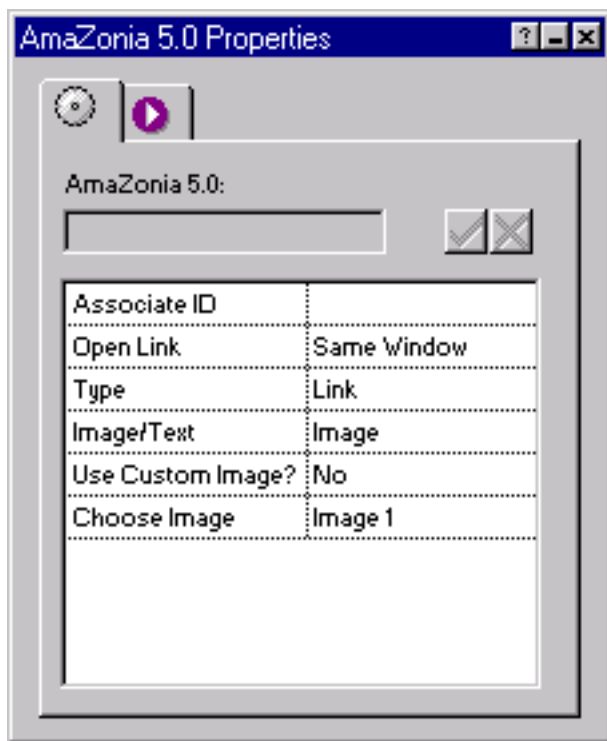
Getting Started with AmaZonia

Configured from the Properties palette in page view, AmaZonia 5.0 lets you create a variety of ways to link your website to Amazon.com.

Getting started with AmaZonia 5.0 is easy!

- Run the Installation program, specifying the location of Fusion v4.0/5.0's component directory.
- Launch Fusion v4.0/5.0
- If the coolmaps.com component toolbar is not visible choose View > Toolbars > Component Tools > coolmaps.com components
- Select the AmaZonia component and drag out an area on the page

The AmaZonia Properties now appear in Fusion's Properties palette.



AmaZonia Options

AmaZonia options allow you to quickly and easily create links to Amazon.com.

Associate ID

Enter your Amazon.com Associates ID here. Don't have one? Click [HERE](#) and learn

about the Amazon.com Associates Program.

Open Link

Select whether the Amazon.com link should be opened in the current browser window or a new one.

TYPE -> Link

- Image/Text - Choose between using an image or text for your link.

If you chose an image link, you have the following options:

- Use Custom Image? - Choose either one of the standard Amazon.com graphics supplied or to use your own.
- Choose Image - If you chose to use a standard Amazon.com graphic, select one from the list.
- Custom Image - Select the custom image if you have set Use Custom Image? to "Yes."

If you chose a text link, you have the following options:

- Custom Text - Enter the text you wish to use for your link here.
 - Font - Choose from a list of fonts.
 - Font Size - Choose the font size for the link.
 - Font Color - Use a color selector to choose a font color.
 - Bold - Make the font bold, or don't.
 - Italic - Italics... to be or not to be?
-

TYPE -> Search Box

- Search Box Type - Choose between a Radio Button type or a Pull Down menu type.
 - The remainder of options in the palette are there to customize what search options will be available in the published search box.
-

TYPE -> Subject & Genre

- Subject & Genre Type - Choose from a list of Subject & Genre boxes. The available Subject & Genre boxes are Books, Music, Video, Toys, Electronics, and Home Improvement.
 - The remainder of options in the palette are there to choose what "sub-subjects" you wish to include or exclude in your boxes.
-

TYPE -> Individual

- ASIN - Enter the ASIN of the product you wish to link to. (FYI: ASIN stands for "Amazon.com Standard Item Number." Every product has one. The number can be found on the item page. In the case of books, the ASIN is the same as the ISBN)
- Image/Text - Choose between using an image or text for your link.

If you chose an Image link, you have the following options:

- Use Custom Image? - Choose to use either the default Amazon.com graphic

for this item, or to use your own.

- Image Size - If you chose to use the default image for the product, choose either the small or large item graphic.
- Custom Image - If you chose to use a custom image, select it here.

If you chose a Text link, you have the following options:

- Custom Text - Enter the text you wish to use for your link here.
 - Font - Choose from a list of fonts.
 - Font Size - Choose the font size for the link.
 - Font Color - Use a color selector to choose a font color.
 - Bold - Make the font bold, or don't.
 - Italic - Italics... to be or not to be?
-

TYPE -> Favorites

- Favorites - Choose a popular Amazon.com page to link to. The Favorites available are:
 - 100 Hot Books
 - 100 Hot CDs
 - 100 Hot Videos
 - 100 Hot DVDs
 - Top Selling Electronics
 - Top Selling Home Improvement
 - Amazon.com Gift Ideas
- Image/Text - Choose between using an image or text for your link.

If you chose a Text link, you have the following options:

- Use Custom Text? - Choose to use either the Favorite name (i.e. "100 Hot Books") or your own custom text.
- Custom Text - If you set Use Custom Text? to "Yes," enter the text you wish to use for your link here.
- Font - Choose from a list of fonts.
- Font Size - Choose the font size for the link.
- Font Color - Use a color selector to choose a font color.
- Bold - Make the font bold, or don't.
- Italic - Italics... to be or not to be?

If you chose an image link, you have the following option:

- Custom Image - Select the image you wish to use for the link.
-

TYPE -> Search Results

- Category - Choose the category in which to search.
- Keywords1 - First keyword to search for.
- Keywords2 - Second keyword to search for.

- **Keywords3** - Third keyword to search for.
- **Image/Text** - Choose between using an image or text for your link.

If you chose a Text link, you have the following options:

- **Custom Text** - Enter the text you wish to use for your link here.
- **Font** - Choose from a list of fonts.
- **Font Size** - Choose the font size for the link.
- **Font Color** - Use a color selector to choose a font color.
- **Bold** - Make the font bold, or don't.
- **Italic** - Italics... to be or not to be?

If you chose an image link, you have the following option:

- **Custom Image** - Select the image you wish to use for the link.