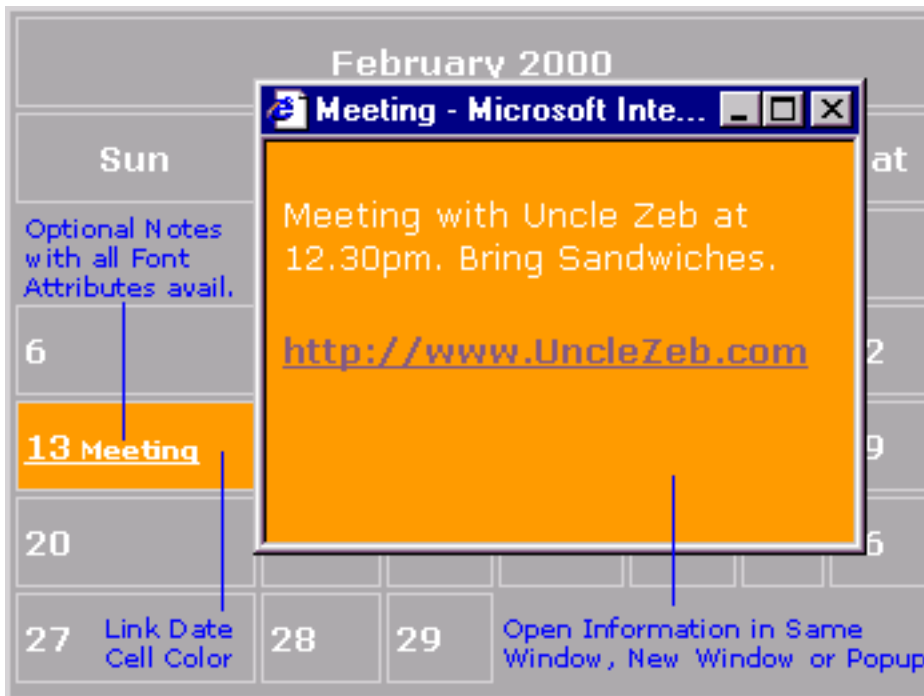




BlindDate 5.0



The BlindDate Tutorial is in four parts:

- [Getting Started](#)
- [Table and Date Options](#)
- [Note and Link Options](#)
- [Usage Notes](#)

Getting Started with BlindDate

BlindDate is a NetObjects Fusion 4.0/5.0 component that allows you to place custom dynamic or static monthly event calendars in your web pages. With BlindDate you can:

- Customize all Table attributes
- Customize all Font attributes
- Add Custom Notes to dates
- Open Date links in same window, new window or custom Popup
- Auto highlight and custom color current date
- and more!

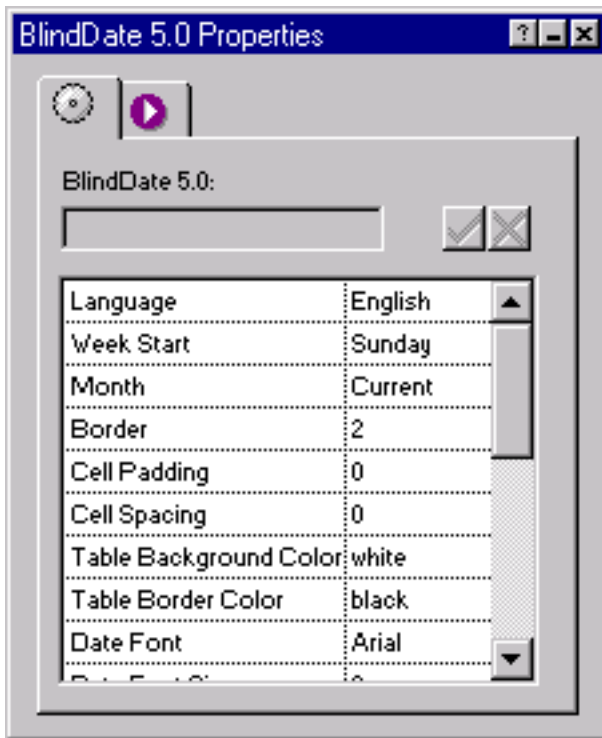


Need a kick start with BlindDate? Sit back and watch the Movie - [Return of the BlindDate!](#) (255k)

Getting started with BlindDate 5.10:

- Run the Installation program, specifying the location of Fusion 4.0/5.0's component directory.
- Launch Fusion
- If the coolmaps.com component toolbar is not visible choose View > Toolbars > Component Tools > coolmaps advanced
- Select the BlindDate component and drag out an area on the page (this graphic does not appear on the published page).

BlindDate 5.10 Properties now appears in Fusion's properties palette.



BlindDate Table and Date Options

BlindDate is a feature rich Calendar component. Take the time to fully explore options available!

The size of BlindDate is controlled by the size of the area you drag out in Page View using the component. e.g. If you'd like a 600pixel wide Calendar, drag out a 600 pixel width BlindDate area.



Need a kick start with BlindDate? Sit back and watch the Movie - [Return of the BlindDate!](#) (255k)

Language

Select the desired language for the calendar. Please note that regardless of selection, the property palette options will remain in English.

Week Start

Specify on what day the calendar week will start.

Month

Select the month your calendar will show.

- Current dynamically shows the current month and highlights the current day in a color of your choice (further down the palette) This option is recommend for most users.
- January - December shows that particular month permanently on your page. If the January - December option is selected you must specify the
 - Year of the month e.g. I want May, in the year 2000
 - Day of the 1st e.g. I want May 2000, so I select "Monday" because May 1st is a Monday)

BlindDate 5.0 includes a range of options for controlling the appearance of the Calendar table.

The image shows a calendar table for February 2000. The title is "February 2000". The days of the week are listed at the top: Sun, Mon, Tue, Wed, Thu, Fri, Sat. The dates are arranged in a grid. The date 19 is highlighted in red. Several styling options are indicated by blue arrows and text labels:

- Font Face, Weight Style & Color**: Points to the title "February 2000".
- Current Date Custom Color**: Points to the date 19.
- Cell Spacing & Padding**: Points to the space between the Sun and Mon headers.
- Table Background, Border Color & Width**: Points to the bottom row of the calendar grid.

Sun	Mon	Tue	Wed	Thu	Fri	Sat
		1	2	3	4	5
6	7	8	9	10	11	12
13	14	15	16	17	18	19
20	21	22	23	24	25	26
27	28	29				

Border

Specify the width in pixels of the border of the Calendar table.

Cell Padding

Specify the width in pixels of the padding applied to the Calendar table.

Cell Spacing

Specify the width in pixels of the spacing applied to the Calendar table.

Table Background Color

Specify the background color applied to the Calendar table.

Table Border Color

Specify the border color applied to the Calendar table.

BlindDate 5.0 includes a range of options for controlling the appearance of the Font that appears in the Calendar table.

Date Font

Choose the font face to be applied to the dates in the Calendar and the Calendar title.

Date Font Size

Specify the font size to be applied to the dates in the Calendar and the Calendar title. Enter a value.

Date Bold (yes/no)

Specify the font size to be applied to the dates in the Calendar and the Calendar title.

Date Italic (yes/no)

Specify the font size to be applied to the dates in the Calendar and the Calendar title.

Date Color

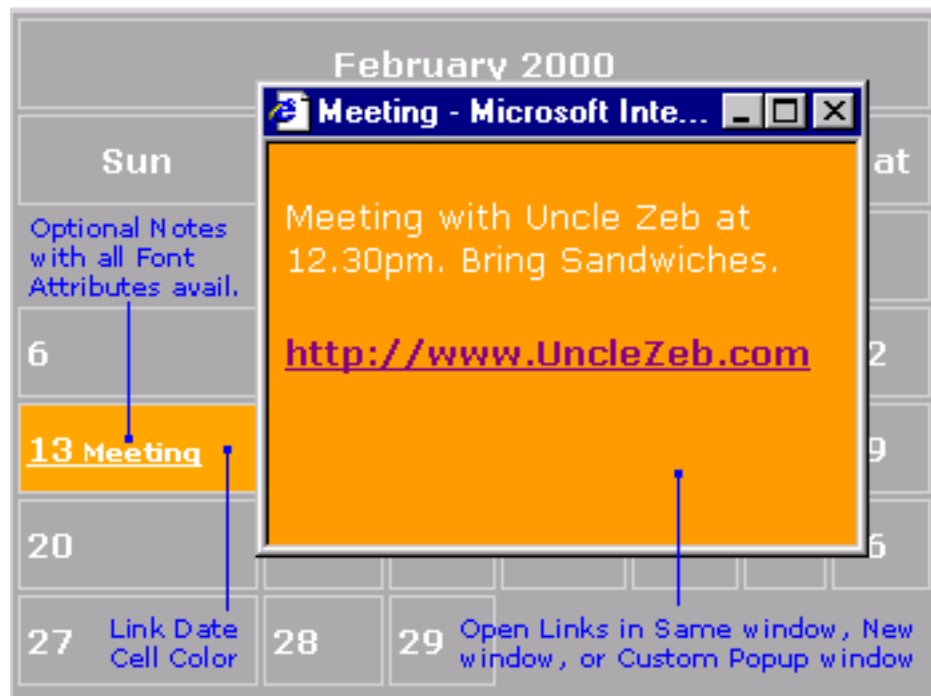
Choose a color to be applied to the dates in the Calendar and the Calendar title.

Current Date Color

Choose a color to be applied only to the current date when Current is the chosen value for Month.

BlindDate Note and Link Options

BlindDate 5.0 includes a range of options for controlling the appearance of the Font that is used for Custom Notes, the optional descriptive text that appears beside Dates in the Calendar.



Custom Note Font

Choose the font face to be applied to the optional Custom Notes which appear beside a date.

Custom Note Font Size

Specify the font size to be applied to the optional Custom Notes which appear beside a date.

Custom Note Bold (yes/no)

Specify the font size to be applied to the optional Custom Notes which appear beside a date.

Custom Note Italic (yes/no)

Specify the font size to be applied to the optional Custom Notes which appear beside a date.

Custom Note Color

Choose a color to be applied to the optional Custom Notes which appear beside a date.

BlindDate 5.0 gives you full control of what happens when a visitor clicks on a Date/Custom Note with an URL linked to it:

Link Type

- **Standard - Same Window** : When the visitor clicks on the Date link the page loads in the same window.
- **Standard - New Window** : When the visitor clicks on the Date link, the page loads a new window.
- **Custom PopUp** : When the visitor clicks on the Date link the page loads in a PopUp window. All attributes of the Popup can be set by you including:
 - **Popup Height**
 - **Popup Width**
 - **Popup Navigation Toolbar**
 - **Popup Location Toolbar**
 - **Popup Status Bar**
 - **Popup Menu Bar**
 - **Popup Scroll Bar**
 - **Popup Resize Handles**

of Date Links

Specify the **TOTAL** number of Date links to be included in the Calendar. When a value is entered the equivalent number of grouped options below appear:

- **Month #*** : Enter the Month number (1-12) the Custom Note is to be applied to
- **Date #*** : Enter the Date of that Month the Custom Note is to be applied to
- **Link #*** : Set the Link (local or remote) that the visitor will be taken to when the Date/Custom Note is clicked
- **Frame Target #*** : Select the frame the link will open in. (note: this option is only available if the Link Type is "Standard")
- **Link Text #*** : Enter the Custom Note Text that will appear beside the Date/Month specified above
- **Cell Color #*** : Choose a cell color that will be applied to the cell containing the specified Custom Note above. Great for highlighting a special Date/Note!

BlindDate Usage Notes

Controlling the Size of BlindDate

The calendar's size is determined by the area you drag out in Page View. Be sure to drag out a large enough area to accommodate all Custom Notes in use.

Useful Links

Looking for answers not answered in this tutorial? Having trouble with BlindDate? Check these useful links:

- [BlindDate Frequently Asked Questions](#)
- [BlindDate Known Issues](#)