

ClubPoll 5.0

Getting Started

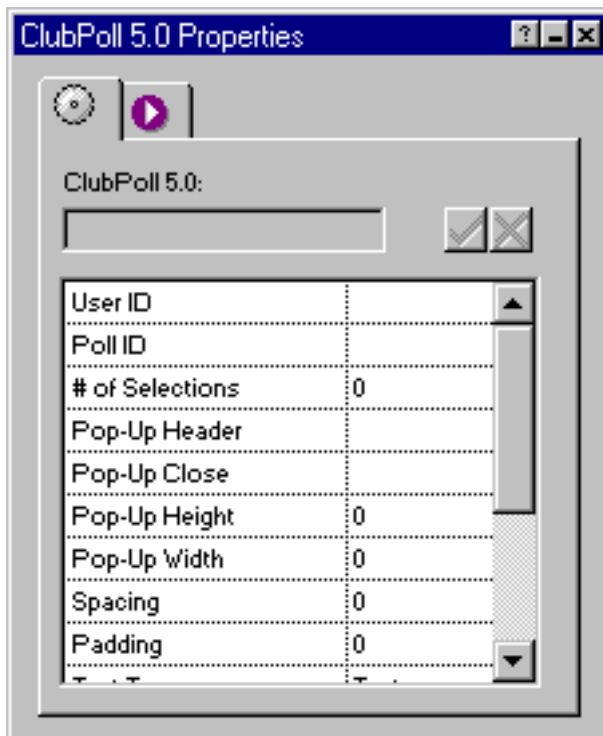
ClubPoll lets you survey visitors to your site, and displays graphical Poll results in real-time using a popup window.

Check out the [Home page](#) to see ClubPoll in action!

Getting started with the ClubPoll:

- Run the Installation program, specifying the location of Fusion 4.0/5.0's component directory.
- Launch Fusion
- If the coolmaps.com component toolbar is not visible choose View > Toolbars > Component Tools > coolmaps.com components
- Select the ClubPoll component and drag out an area on the page (this graphic will not appear on the published page).

The ClubPoll properties now appears in Fusion's properties palette.



ClubPoll Admin

The User ID and Poll ID in the ClubPoll Properties palette must be configured for ClubPoll to function. These numbers can both be obtained from the online [ClubPoll Admin](#) area.

Your UserID is displayed on the main Admin page - enter this in the ClubPoll properties palette.

Select the Add ClubPoll option.

- specify a name for your Poll
- enter the domain where the poll is located

The response page will indicate your PollID number. Enter this in the ClubPoll properties palette.

Your membership entitles you to one poll. A Poll can be altered and re-used. Additional ClubPolls can be purchased from the Admin area.

Use the Admin area to manage your polls and view poll results.

Setting up the Poll

Setting up your ClubPoll is easy! Set the Properties Palette options, publish your site and your dynamic survey is ready!

Properties Palette Options

of Selections

Specify the number of Poll selections (i.e. 'answers'). Fields (e.g. Selection #1) will become available for each selection. Type in answer choices.

Pop-Up Header

Specify the line of text to appear above the survey results.

Pop-Up Close

Specify the line of text that when clicked, closes the Results pop-up window.

Pop-Up Height

Specify the height of the pop-up.

Pop-Up Width

Specify the width of the pop-up.

Spacing

Specify the spacing between the radio buttons and the possible answers (in pixels).

Padding

Specify the padding for the table that the results will be shown in.

Display Type

Select whether you want your statistics shown as numbers, percentages, or both.

Total Count

This feature provides the total number of visitors who have participated in your survey.

Text Type * - Text/FauxGraphic

If you select Text this allows you to choose font style, font color, Italics, font size, bold, all with pull-down menus or by double clicking through choices.

If you select FauxGraphic you must browse to a FauxGraphic template file and make your selection from the related set of options that will appear. Refer to the [FauxGraphic tutorial](#) for assistance.

Font Style

Specify a font face to be used.

Font Color

Select a color

Italics - yes/no

Font Size

Specify a font size

Bold - yes/no

* FauxGraphic owners only

Layout on Page

In publish view, the potential answers will line up in the upper left corner of the ClubPoll area. The ClubPoll area will not show up in publish view. The radio buttons and text will maintain the same layout placement as the ClubPoll area in page view. Position the layout region accordingly, then create a text box outside the ClubPoll. Place the text box in the desired relationship to the ClubPoll radio buttons and answer text.

Move from IP Address to Cookies

Using cookies makes it possible for more than one person sharing the same IP address to participate in the poll.

Admin Page

Only use [reset poll] if you intend to use the same names, Otherwise, delete and add a new poll.