



CountDown5.0

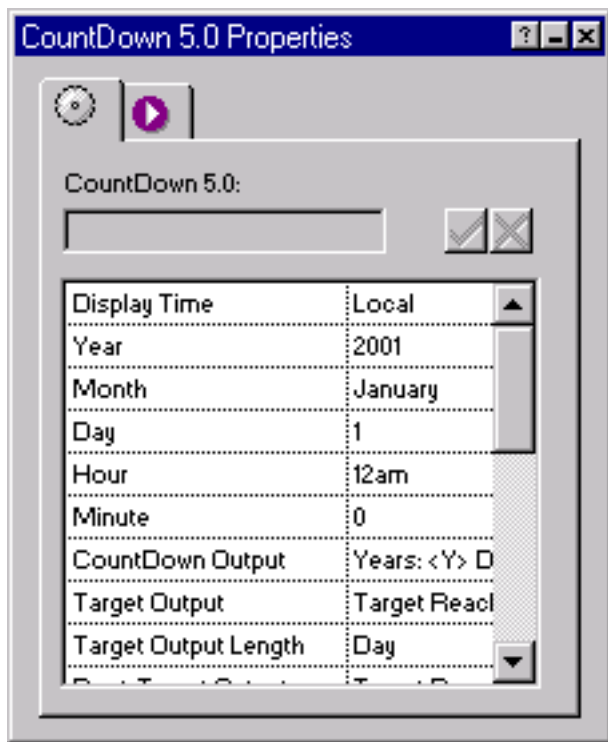
Getting Started with CountDown

CountDown is a NetObjects Fusion version 4/5/MX component which allows you to create dynamic text on your page that shows the amount of time until a date in the future.

Getting started with CountDown is easy!

- Run the Installation program, specifying the location of Fusion v4/5/MX's component directory.
- Launch Fusion v4/5/MX.
- If the coolmaps.com component toolbar is not visible choose View > Toolbars > Component Tools > coolmaps advanced
- Select the CountDown component and drag it on your page.

The CountDown Properties now appears in Fusion's properties palette.



Countdown Options

Display Time

Determines the time on which the countdown is based. Set to "Local," the countdown

will be relative to the visitor's computer. If a specific time zone is desired, select "Other" and enter the time zone offset in the Time Zone Offset field.

Time Zone Offset

Enter the time zone offset on which the countdown will be based.

Year

Select the target year.

Month

Select the target month.

Day

Select the target day.

Hour

Select the target hour.

Minute

Select the target minute.

CountDown Output

Output of the countdown. The countdown output can be customized by intermixing text with the specially reserved countdown markers. The following is the list of markers.

| | |
|-------|---------|
| < Y > | Years |
| < D > | Days |
| < H > | Hours |
| < M > | Minutes |
| < S > | Seconds |

Each marker, when placed inside the CountDown Output field, will be replaced with the corresponding countdown numeric figure. Markers may be omitted, but are not to be used more than once. Combine markers and text to produce the output. For example:

< D > days and < H > hours until the New Year.

produces:

Target Output

Text that is to be displayed when the target time is reached.

Target Output Length

Target output ceases displaying upon the advancement of the selected time unit (based on the target time).

Post-Target Output

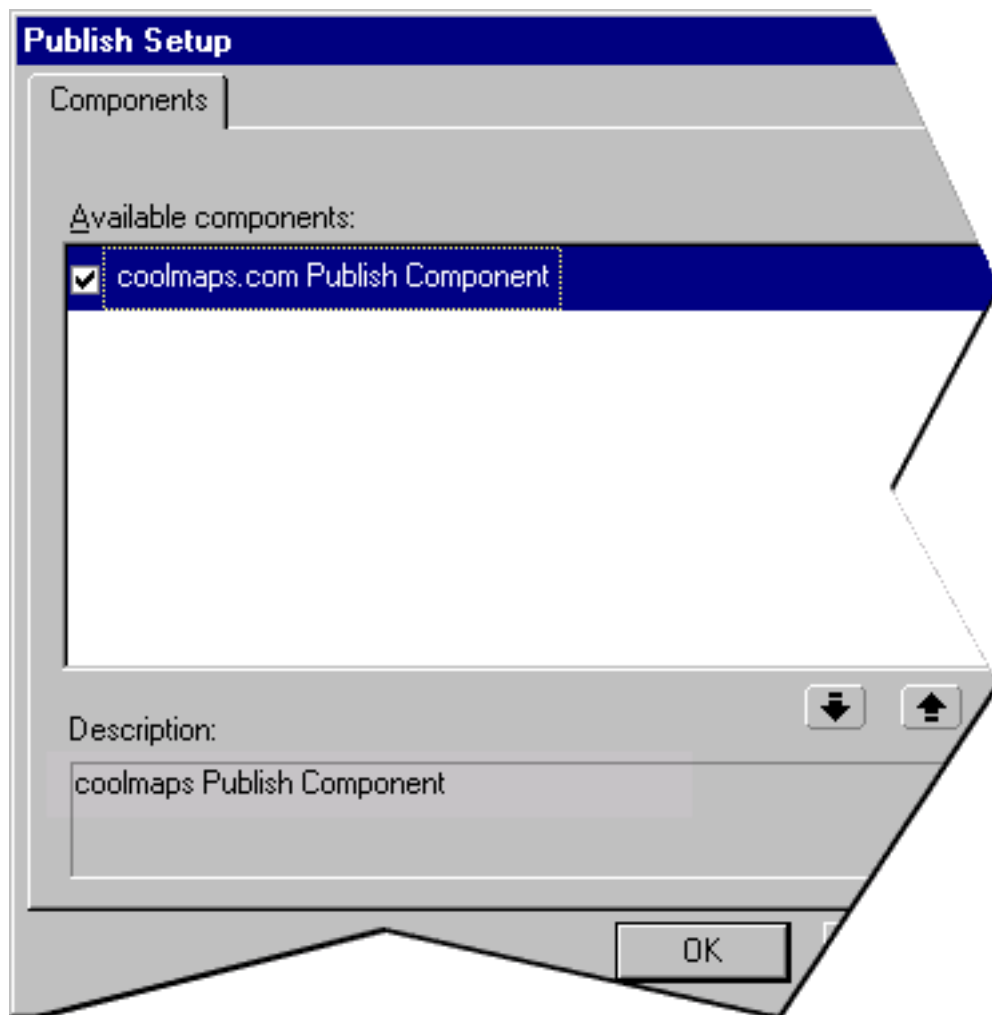
Text that is to be displayed when the target time expires.

The remaining options in the palette are for customizing the fonts of the output text. The output text is divided into two separate elements, each with its own font settings: Time and Text. Time elements are those represented by the specially reserved markers ("< Y > ", "< D > ", etc.). Text elements encompass all other text entered into the three "Output" fields.

- **Font**
The font to be used. If "Custom Font" is selected, enter it in the Custom Font field.
- **Font Size**
The font size to be used. If Font Size Unit is set to "Constants," select from the browser predefined constants listed. If Font Size Unit is defined other than "Constants," enter a number that corresponds to the desired size in the selected unit.
- **Font Size Unit**
The font size unit to be used. Choose the measurement unit that best suits the need.
- **Font Style**
The font style to be used. Choose between normal, italic, bold, or **italic bold**.
- **Font Decoration**
The font decoration to be used. Choose between none, underline, overline, or strikethrough.
- **Font Color**
The font color to be used. Use Fusion's color picker to select a color.

Once the palette options are configured, the coolmaps.com Publish Component must be enabled.

- Choose Publish View > Publish > Publish Components
- Check 'coolmaps.com Publish Component'



Don't see the coolmaps.com Publish Component listed? Get it [here!](#)