



## Getting Started with DogEar

**DogEar Update!** Feb 03. Disable Right Click 'View Source' in Browser.

DogEar 5.0 is a NetObjects Fusion v4/v5 compatible component which allows you to insert browser functions directly onto your web pages including:

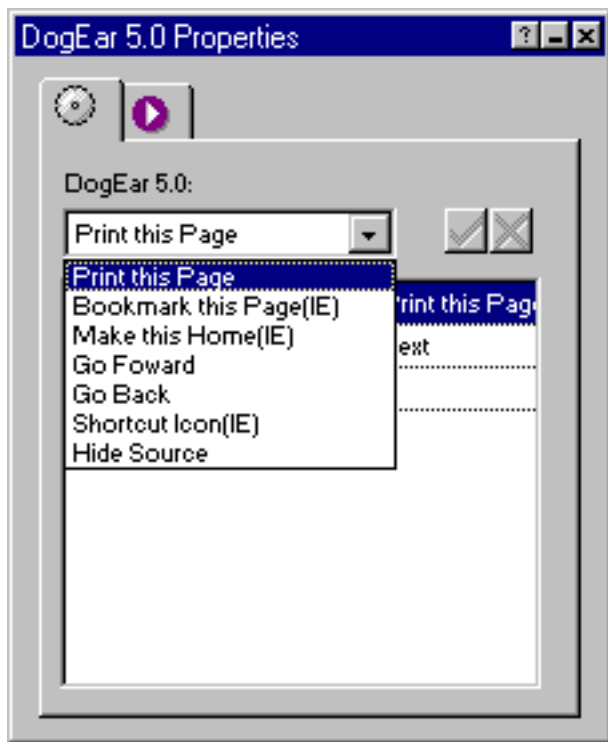
- Print this Page
- Add Page to Favorites
- Set Home Page
- Place Forward/Backward buttons
- Set custom Bookmark and URL window Icon
- Disable Right Click 'View Source' option in Browser

Browser Compatibility of all functions are outlined [here](#).

### Installing DogEar 5.0

- Run the Installation program, specifying the location of Fusion 5.0's component directory.
- Launch Fusion
- If the coolmaps.com component toolbar is not visible choose View > Toolbars > Component Tools > coolmaps.com components
- Select the DogEar component and drag out an area on the page (this graphic does not appear on the published page).

DogEar's properties now appear in Fusion's properties palette.



## DogEar Options

When using DogEar it is important to be aware of Browser compatibility issues - not all of DogEar functions work in all browsers v3 and above.

If you're viewing this page in Netscape 4.\* you will only see the history Back, history Forward and Print icons.

If you're viewing this page in MSIE 5.\* you will see all five icons - Back, Forward, Add to Favorites, Print and Set as Home Page.

If a DogEar function is not compatible with a browser, the browser ignores the code, effectively commenting it out.

The DogEar 5.0 Properties palette includes the following options:

### Action

- Print this Page
- Bookmark this Page
- Make this Home
- Go Forward
- Go Back
- ShortCut Icon
- Hide Source

All Actions apart from ShortCut icon allow you to specify a Text or Image link to initiate the function. e.g. a visitor to your page can either click a text link or image to print a page.

Print this Page

Prints current page.

Compatibility: Works only with Internet Explorer 5 and Netscape 4 and above

Bookmark this Page

Bookmarks page specified.

Compatibility: Works only with Internet Explorer 5. Invisible to Netscape users

- URL - Specify URL of page you wish to be bookmarked
- Title - Specifies the title that will be visible in the 'Favorites' window.

Make this Home

Sets specified page as Homepage for visitor.

Compatibility: Works only with Internet Explorer 5. Invisible to Netscape users.

- URL - Specify URL of page you wish to set as Homepage.

Go Forward

Advance one page forward (just like the forward button in the browser).

Compatibility: Works in MSIE 3 and above, Netscape 3 and above

Go Back

Back one page (just like the back button in the browser).

Compatibility: Works in MSIE 3 and above, Netscape 3 and above

ShortCut Icon

Set a custom icon that will appear in the visitor's Browser Favorites and URL Window when the page is bookmarked.

Compatibility: Works in MSIE 5 only, invisible to other browsers. Note that MSIE 5 does not always display the icon. Does not work locally.



Icons (.ico) should be 16x16 pixels, 256 colors. CCC uses and recommends [Axialis AX-Icon Editor](#) or [MicroAngelo](#).

You can also use the online [Favicon](#) builder to create your DogEar browser icon.

To locate an .ico. file in Fusion when browsing for images you must choose 'All files (\*.\*)' from the 'Files of Type' dropdown.

Note: Icons are easy to create. Icon editors are similar to MS PaintBrush and are small shareware apps you can download and evaluate fully!

Hide Source

Hide Source disables Right Click functionality stopping visitors from viewing Source code via the Right Click Menu. Visitors can still choose to view Source via the Edit Menu. Hide Source is intended to act as a deterrent.

- Right Click Message - Custom Alert Message displayed to MSIE users\*

[ [View a Demo of Hide Source here!](#) ]

\*An Alert box is the only way to accomplish disabling the Right Click in MSIE. Netscape users do not see the Alert Box.