



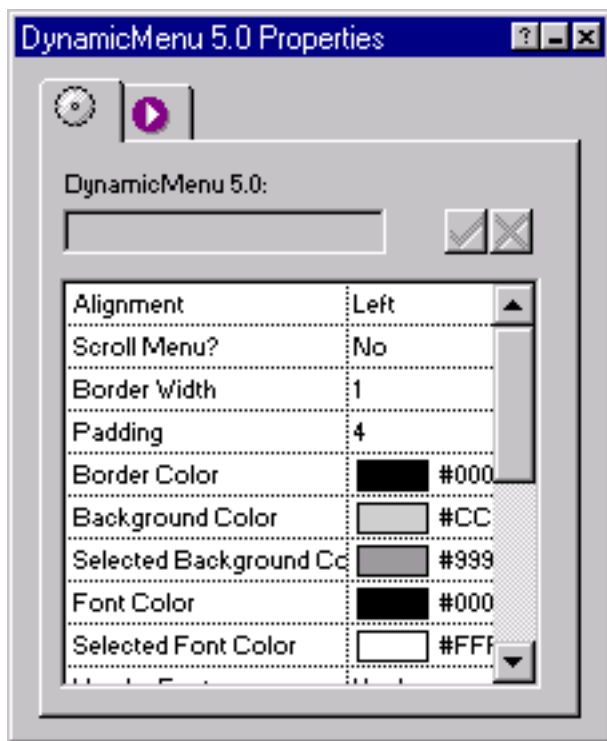
⚡ Getting Started with DynamicMenu

DynamicMenu is a DHTML navigational menu bar. It's easily implemented and looks great when published!

Getting started with DynamicMenu 5.0 is easy!

- Run the Installation program, specifying the location of Fusion v4.0/5.0's component directory.
- Launch Fusion v4.0/5.0
- If the coolmaps.com component toolbar is not visible choose View > Toolbars > Component Tools > coolmaps advanced
- Select the DynamicMenu component and drag it out to an area on the page.

The DynamicMenu Properties now appears in Fusion's properties palette.



Note: The placement of the component within the page layout is of no consequence. Regardless of the placement, the physical, published location of DynamicMenu will be at the top of the browser window.

DynamicMenu Options

Alignment

Determines the alignment of the the menu bar.

Scroll Menu?

Determines whether the menu will be scrolled as the page is scrolled so that it always remains at the top of the browser window.

Border Width

In pixels, the border width of the menu.

Padding

In pixels, the padding between the menu's text and the menu's border.

Border Color

The menu's border color. Use Fusion's color picker to select a color.

Background Color

The menu's background color. Use Fusion's color picker to select a color.

Selected Background Color

The color of a selected item's background. Use Fusion's color picker to select a color.

Font Color

The menu's font color. Use Fusion's color picker to select a color.

Selected Font Color

The color of a selected item's font. Use Fusion's color picker to select a color.

Header Font

The font of the menu headers. If "Custom Font" is chosen, enter it in the Custom Header Font field.

Header Font Style

The font style of the menu headers.

Header Font Weight

The font weight of the menu headers.

Header Font Size

The font size of the menu headers.

Sub-Item Font

The font of the menu sub-items. If "Custom Font" is chosen, enter it in the Custom Sub-Item Font field.

Sub-Item Font Style

The font style of the menu sub-items.

Sub-Item Font Weight

The font weight of the menu sub-items.

Sub-Item Font Size

The font size of the menu sub-items.

of Menus

The number of menus on the menu bar. For each menu that you want to have, you'll

need to configure the following options:

Menu #n Header Type

Determines whether the header will be linked or not.

Menu #n Header

If the above option is set to "Link", use Fusion's link selector to select the menu's header. If the above option is set to "No Link", enter the menu's header as text into this field.

Menu #n Width

The width of the drop down menu.

of Menu #n Items

The number of sub-items in the menu.

Menu #n, Item #n

Use Fusion's link selector to select a menu sub-item.