

DynamicMenu2 5.0

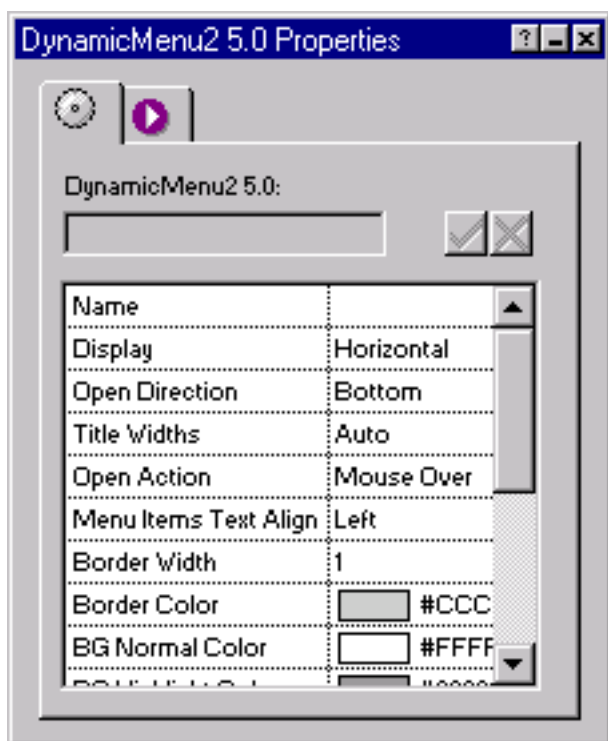
Getting Started with DynamicMenu2

DynamicMenu2 is a DHTML navigational menu bar. It's easily implemented and looks great when published!

Getting started with DynamicMenu2 5.0 is easy!

- Run the Installation programs, specifying the location of Fusion v4.0/5.0/MX's component directory.
- Launch Fusion v4.0/5.0/MX.
- If the coolmaps.com component toolbar is not visible choose View > Toolbars > Component Tools > coolmaps advanced
- Select the DynamicMenu2 component and drag it out to an area on the page.

The DynamicMenu2 Properties now appears in Fusion's properties palette.



DynamicMenu2 Options

Name

A unique name to identify the menu. Note: Do not assign the name menu to the menu as this is a reserved word and will cause DynamicMenu2 to not function

properly.

Display Horizontal | Vertical

Determines whether the menu will be displayed horizontally or vertically.

Horizontal options - The following options are available only if Display is set to **Horizontal**.

- **Open Direction Bottom | Top**
Determines the direction in which the menu will open.
- **Title Widths Auto | Custom**
Determines whether the menu title widths will be sized to fit the title or whether a custom width is desired.

Vertical options - The following options are available only if Display is set to **Vertical**.

- **Open Direction Right | Left**
Determines the direction in which the menu will open.
- **Menu Width**
The menu bar's width.
- **Menu Offset**
The offset of the menus from the menu bar.

Open Action Mouse Over | Mouse Click

Determines whether the menus should open when moused over or when clicked.

Menu Items Text Align Left | Center | Right

Determines the alignment of the menu items' text. Does not apply to menu titles. Menu titles are always centered.

Border Width

In pixels, the border width of the menu.

Border Color

The menu's border color. Use Fusion's color picker to select a color.

BG Normal Color

The menu's background color. Use Fusion's color picker to select a color.

BG Highlight Color

The color of a selected item's background. Use Fusion's color picker to select a color.

Font

The font of the menu. If "Custom Font" is chosen, enter it in the Custom Font field.

Font Size

The font size of the menu.

Font Style Normal | Italic

The font style of the menu.

Font Weight Normal | Bold

The font weight of the menu.

Font Normal Color

The menu's font color. Use Fusion's color picker to select a color.

Font Highlight Color

The color of a selected item's font. Use Fusion's color picker to select a color.

Link Name

Name used by internal site links in the menu bar. Use the standard page name or one of the custom set names (banner, title, or button).

Custom Names?

If "No," DynamicMenu2 will always use the name of the menu item as specified through the Link Name option. If other, custom text is desired, select "Yes" and enter it in the Name field of each menu item.

of Menus

Enter the number of menus there will be on the menu bar. For each menu, the following options must be configured. Some of the options are only available with certain configurations.

Mouse Over options - The following options are available only if Open Action is set to Mouse Over.

- **Menu #n Title Type Link | No Link**
Determines whether the menu title will be a link or not.
- **Menu #n Title**
If Menu #n Title Type is set to Link, use Fusion's link selector to select a page. The selected page's name will be used as the menu item name if a custom name is not specified. If Menu #n Title Type is set to No Link, enter text that will be used as the menu title.
- **Menu #n Title Name**
Enter the custom name for the menu title. If no custom name is entered, the page name, as specified through the Link Name option, will be used as the menu title name. This option only available if the menu title is a link and the Custom Names? option is set to "Yes."

Mouse Click option - The following option is available only if Open Action is set to Mouse Click.

- **Menu #n Title**
The menu title. Enter the menu title as text into the palette.

Horizontal and Custom Title Widths option - The following option is available only if Display is set to Horizontal and Title Widths is set to Custom.

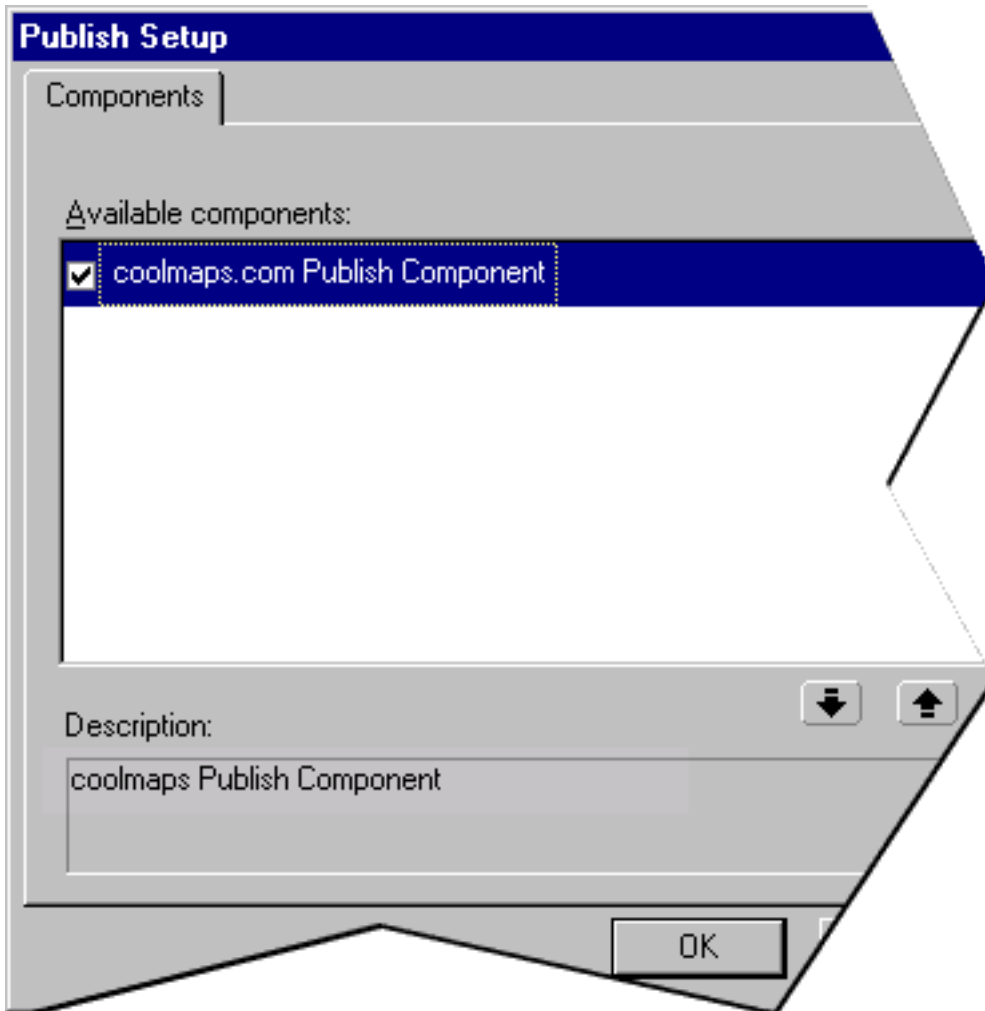
- **#n Title Width**
In pixels, the menu title width.
- **Menu #n Items Width**
In pixels, the width of the menu.
- **# of Menu #n Items**
The number of items in the menu. For each item, there is the following option.
 - **Menu #n, Item #n**
Use Fusion's link selector to select a menu item. The selected page's name will be used as the menu item name if a custom name is not specified.

■ Menu #n, Item #n Name

Enter the custom name for the menu item. If no custom name is entered, the page name, as specified through the Link Name option, will be used as the menu item name. This option only available if the Custom Names? option is set to "Yes."

Once the palette options are configured, the coolmaps.com Publish Component must be enabled.

- Choose Publish View > Publish > Publish Components
- Check 'coolmaps.com Publish Component'



Don't see the coolmaps.com Publish Component listed? Get it [here!](#)