



FileAway 5.0

Getting Started with FileAway

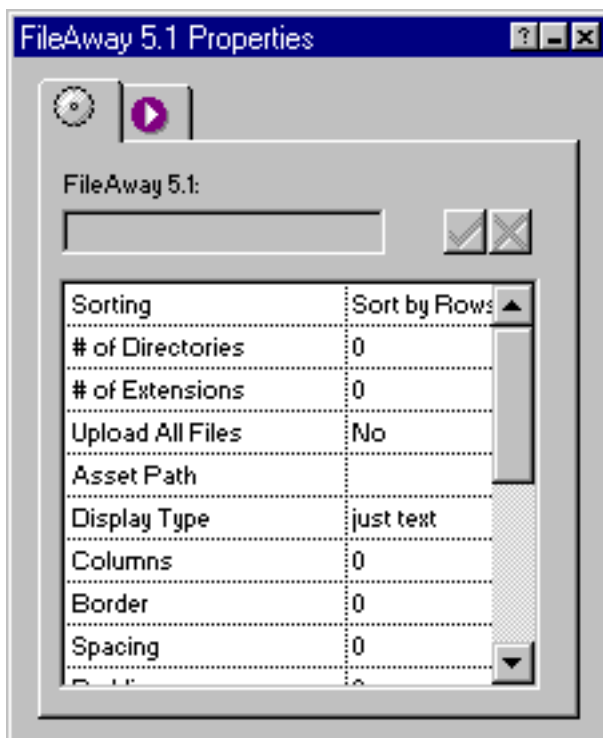
FileAway is a NetObjects Fusion 5.0 component which lets you quickly upload and link-to multiple files. You tell FileAway the file types and directories. The component sends those files up to the server and provides links to them on your page.

In this tutorial, you will learn how to select the files you want to upload, how to select the types of links you want to provide, and how to customize the look and feel of those links.

Getting started with the FileAway:

- Run the Installation program, specifying the location of Fusion 4.0/5.0's component directory.
- Launch Fusion
- If the coolmaps.com component toolbar is not visible choose View > Toolbars > Component Tools > coolmaps.com components
- Select the FileAway component and drag out an area on the page (this graphic does not appear on the published page).

The FileAway properties now appears in Fusion's properties palette.



FileAway Options

The following FileAway options are found on the Properties Palette:

Sorting

Three sorting methods to choose from:

- **Sort by Rows**
Sorts files left to right, top to bottom
- **Sort by Columns**
Sorts files top to bottom, left to right
- **None**
No sorting, files are listed in order they are encountered

of Directories

Identify the number of directories containing the files you want to link to. This will open up the same amount of boxes on the palette. In each box pick any one file from each directory to identify the directory. It does not matter which file you choose.

Display Type

The window contains the following options:

- **just text**
choose this option if you want the filename only to identify each link.
- **text-icon**
choose this option if you want the filename preceded by some text of your choosing to identify each link. Choose the text in the Text Icon #_ bar that opens up below.
- **graphic icon**
choose this option if you want the filename preceded by an image of your choosing to identify each link. Choose the location of the desired image in the Image Icon #_ bar that opens up below.
- **drop-down**
choose this option if you want the links to be chosen by a drop-down menu. Choose the drop-down type in the DropDown Type bar that opens up below.
- **faux graphic**
choose this option only if you own the FauxGraphic component.

of Extensions

Choose the types of files (e.g.: doc, jpg, gif, xls) that you would like links to.

Asset Path

Choose here where you would like the component to place the files on the server. Leaving this blank will place all the files in the root directory.

Upload All Files

This option will cause the component to upload all the files in the selected directory to the server. Still, only the files with the proper extension will be linked to. Use this option if you are choosing to link to external HTML files. A link on that file will work

as expected, assuming that all the graphics and other items required by that HTML file are in the same directory as the file (all the assets it needs will be uploaded!).

Columns

Enter the number of columns you would like your output to appear in. Will display links in a table format.

Border

The larger the number you choose the thicker the border of the table will be.

Spacing

The larger the number you choose the thicker the spacing will be between links in the table.

Padding

The larger the number you choose the more area in each cell of the table.

Bold

Choose if you want the link names to be bolded.

Yes or No.

Font Size

Choose the font size of the link names.

Font Color

This option is to choose the font color of the text graphic, but is not available in this version. (If you want to change the color of the links, you will need the FreeStyle component.)

Italics

Choose if you want the link names to be italicized.

Yes or No.

Font Style

Choose the font.

Target

Choose one of these options to specify where you want the links to show up. If you are not using frames, you still might want to select a frame (like "Right") because it will force the link to be opened up in a new window.

Be sure to see our [FileAway Component Spotlight](#).