



# FreeStyle 4.0

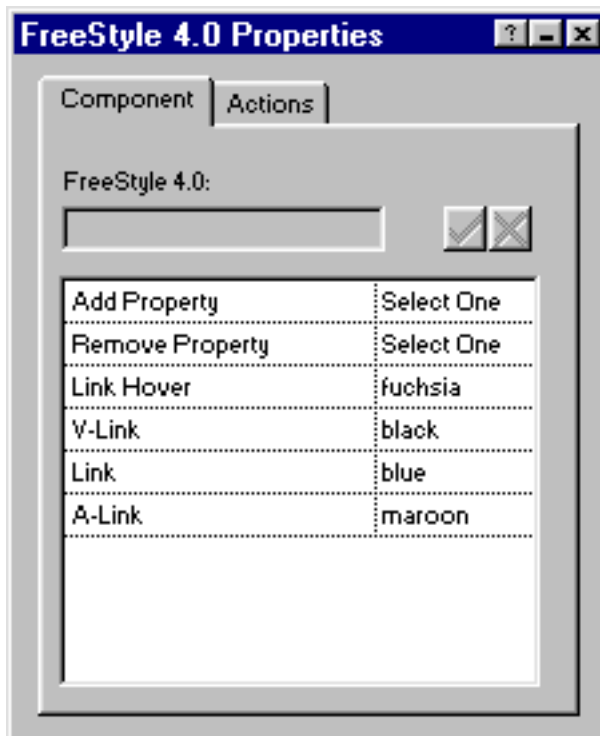
copyright © 1999 coolmaps.com inc

## Getting Started with FreeStyle 4.0

FreeStyle 4.0 brings CSS to Fusion 4.0. Now you can turn off underlining on links, introduce hover effects and more!

- Run the Installation program, specifying the location of Fusion 4.0's component directory.
- Launch Fusion
- If the coolmaps.com component toolbar is not visible choose View > Toolbars > Component Tools > coolmaps.com components
- Select the FreeStyle component and drag out an area on the page (this graphic does not appear on the published page).

The FreeStyle properties now appears in Fusion's properties palette.



## FreeStyle Options

CSS is fully supported by MSIE 4.\* and above, partially

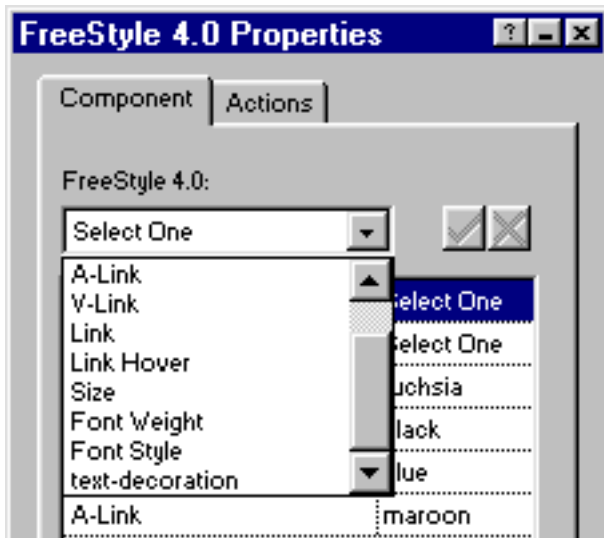
supported by Netscape 4.\*. Be sure to check your target browser.

#### Add Property

Add properties including Font Face, Weight, Style, Size, and Text Decoration.

When Add Property is selected, the properties are available from the dropdown at the top of a palette.

Once selected they appear in the body of the properties palette with their own options available.



#### Remove Property

If a property is no longer required, select Remove Property and then the property you wish to remove from the dropdown.

#### A-Link (Active Link)

Choose from a range of colors.

#### V-Link (Visited Link)

Choose from a range of colors.

#### Link

Choose from a range of colors

#### Link Hover

Choose from a range of colors. Creates a mouseover change of color. Supported by MSIE 4.\* and up

#### Additional Properties...

#### Font

Choose from cursive, fantasy, monospace, sans-serif and serif.

#### Size

Choose from a wide range of sizes including xx-large to xx-small, and larger and smaller.

#### Font Weight

Choose from Normal or Bold

## Font Style

Choose from Normal or Italic

## Text Decoration

Choose from None, Underline, Overline, and Line Through.

Great for removing Link underlining!

**NB.** With all coolmaps components, options can be 'scrolled' through and then selected by double clicking on the option in the Properties Palette or via the dropdown.