



LineOne 4.0

copyright © 1999 coolmaps.com inc

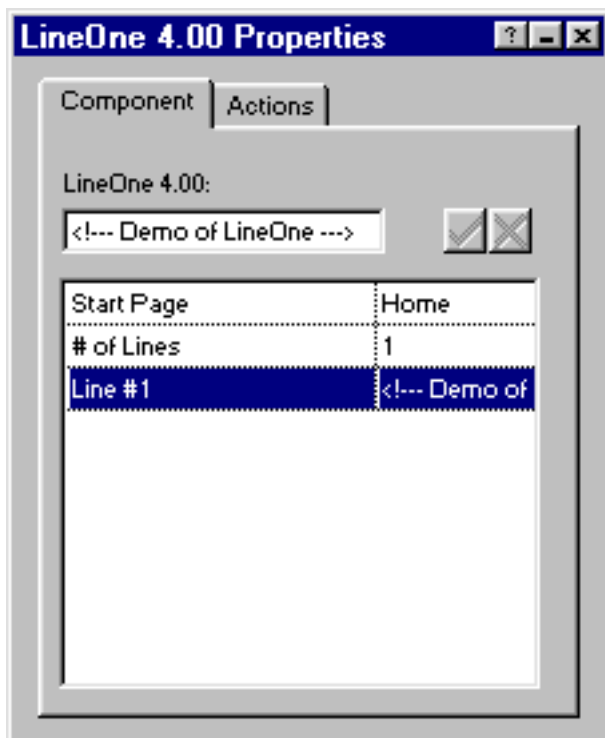
Getting Started

In Fusion, the very first line of the HTML file has been the itch on your back that you could never scratch. Not anymore!

LineOne is actually two components. One that you place on the page, and enter the code you wish to appear before the head. The other is a Publish component that actually places the code into the HTML file.

- Run the Installation program, specifying the location of Fusion 4.0's component directory.
- Launch Fusion
- If the coolmaps.com component toolbar is not visible choose View > Toolbars > Component Tools > coolmaps.com components
- Select the LineOne component and drag out an area on the page (this graphic does not appear on the published page).

The LineOne properties now appears in Fusion's properties palette.



Entering your code is as easy as setting the number of lines and entering the code for each line.

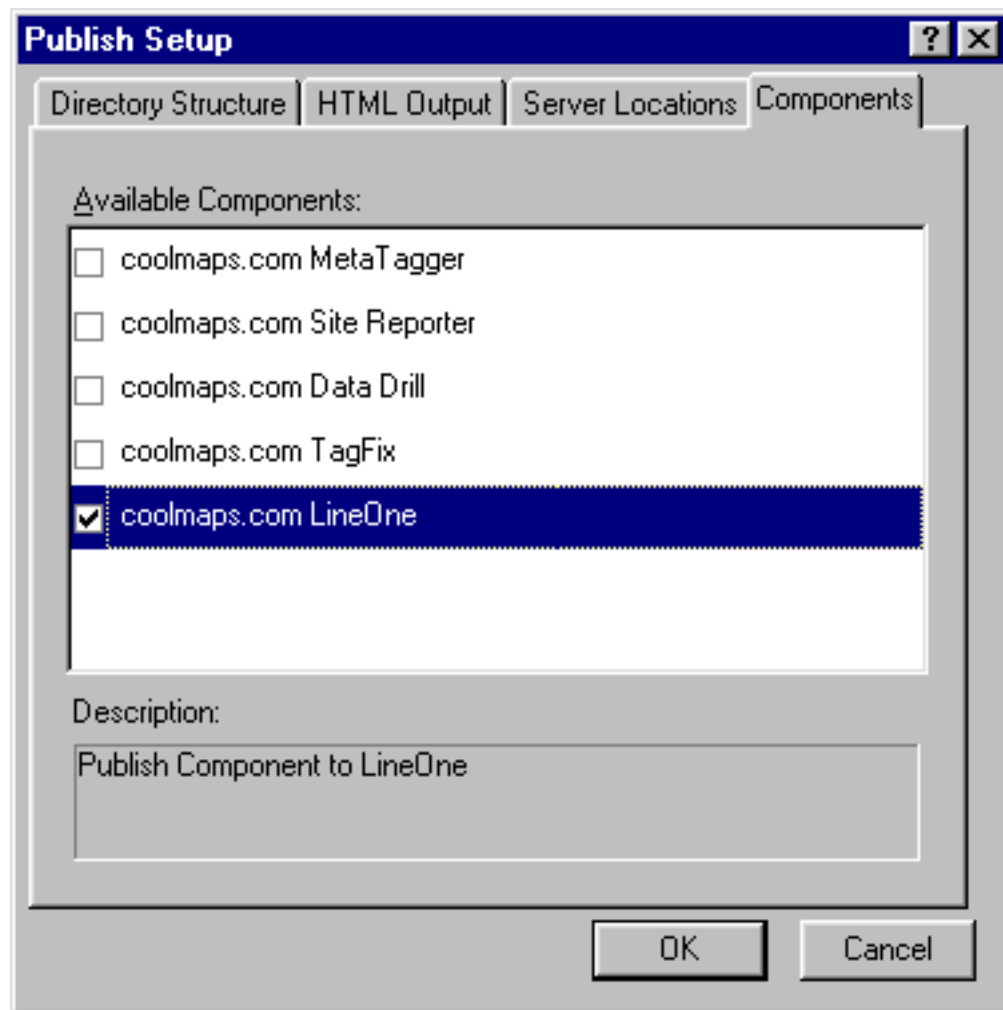
LineOne will not add anything to your code!

If you place LineOne in the Layout Region the code will only be added to that page. If you place it in a Masterborder it will be added to all pages that use that Masterborder.

Activating Post Publish

Once you have entered the code in LineOne palette in Page View, go to Publish View and activate the LineOne post publish component.

Choose Set up > Components and check the LineOne box.



Each time you publish with LineOne activated the code you entered in Page View will be added to the top of the specified pages.

```
<!--- Demo of LineOne --->
<!DOCTYPE HTML PUBLIC "-//W3C//DTD HTML 3.2 FI
<HTML>
<HEAD>
<META HTTP-EQUIV="Content-Type" CONTENT="text/
<META NAME="Generator" CONTENT="NetObjects Fus
<TITLE>Home</TITLE>
</HEAD>
```