



# LinkMaster 5.0



## Getting Started

LinkMaster 5.0 is a powerful component that allows you to generate site wide navigation within a small number of clicks. Navigation can either be as a dropdown or text based hierarchical with the option of including graphics.

To get started with LinkMaster:

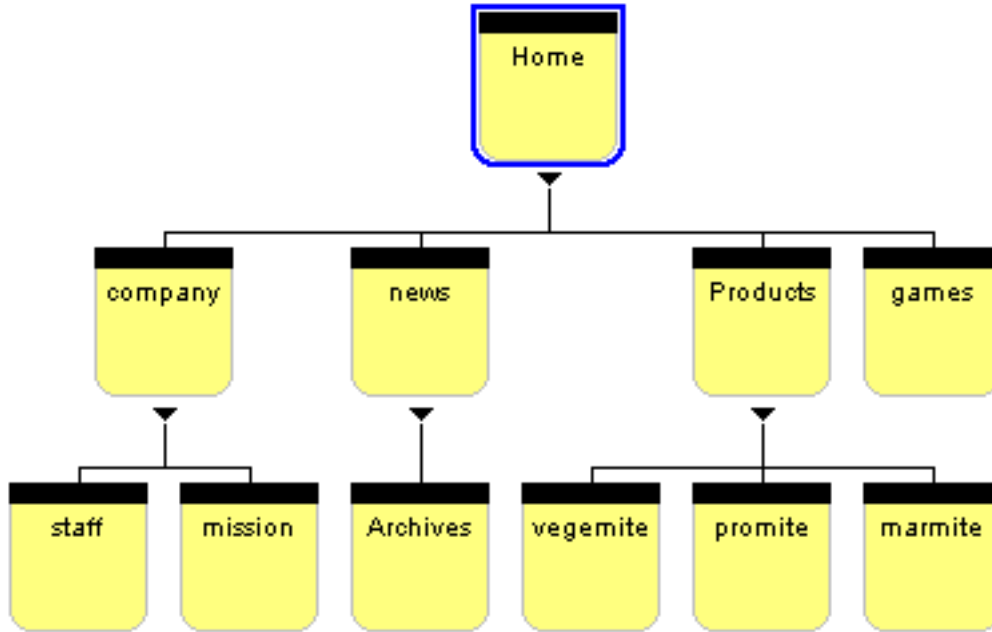
- Run the Installation program, specifying the location of Fusion 4.0/5.0's component directory
- Launch Fusion
- If the coolmaps.com component toolbar is not visible choose View > Toolbars > Component Tools > coolmaps.com components
- Select the LinkMaster component and drag out an area on the page

The LinkMaster properties now appears in Fusion's properties palette.



## Site Tree Relationships

LinkMaster 4.0 draws its information from Fusion's Site Tree. It is critical that the site tree is organized and that the relationships between pages are understood.



In the site map above:

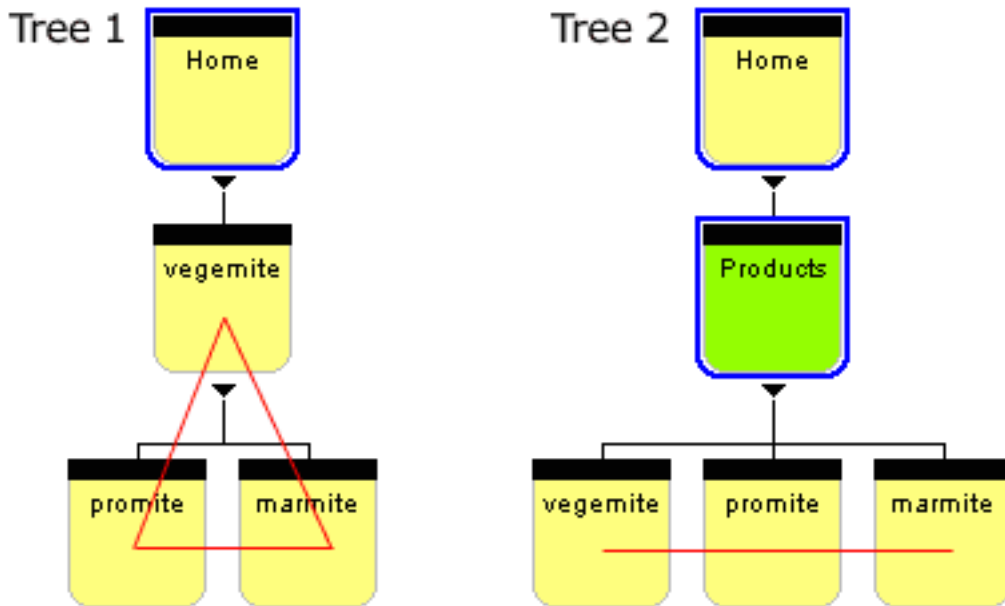
- Home is the Parent page of Company, News, Products & Games
- Company is the Parent page of Staff & Mission
- Company, News, Products & Games are on the same Level - often referred to as Siblings
- The Staff and Mission pages are Children of Company

The options in LinkMaster 'talk' in this language.

## Place Holder Pages

A key concept when using the LinkMaster, and when working with Fusion's Site Tree in is that of place holder pages.

Place holder pages are often not linked to any pages, and not published. Automated linking power comes from arranging related items on the same level, in groups. Place holder pages are a way to maintain correct site tree layout to maximize automatic linking power.



Tree 1 illustrates a common mistake when working with the site tree. The three mites' are similar products but have been arranged in a 'triangle'.

The power of site view cannot be realized because the relationship between the three pages is too complex. There is a Parent, Children, and Siblings!

Tree 2 illustrates the solution. The 'Products' page is the placeholder. It may or may not be published - its main purpose is to create an efficient site tree.

There is now only one relationship - the mites' pages are all siblings, or on the same level! This is ideal for automated linking/navigation.

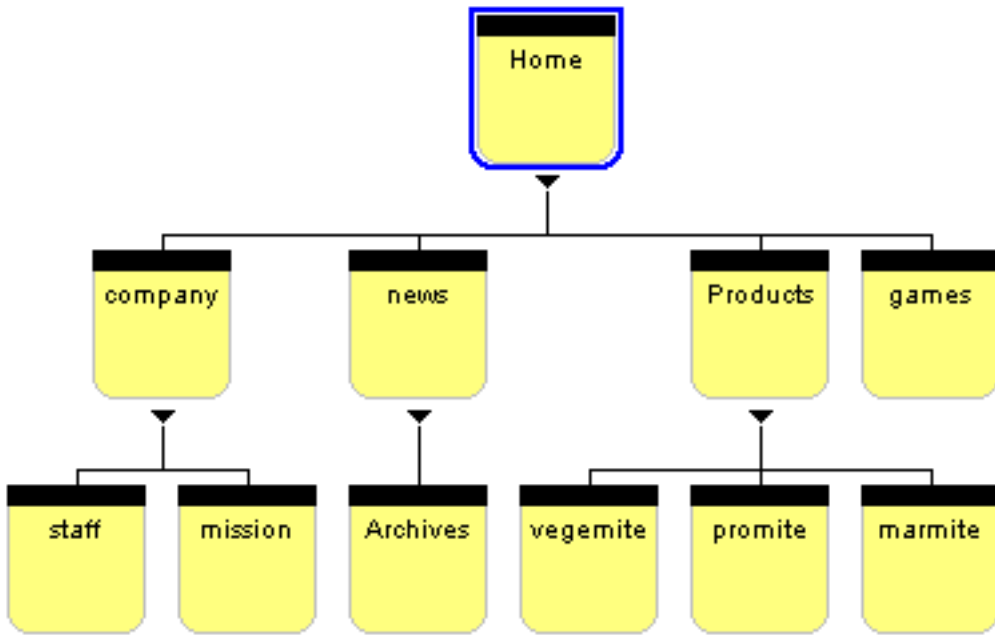
LinkMaster 4.0's great new feature 'ignore' can be then used to exclude pages like 'Products' from the Linking/Navigation, regardless of its Publish status.

## LinkMaster Demo

Let's take a look at the power of LinkMaster in action, it's as easy as 1,2,3!

### 1. Site View

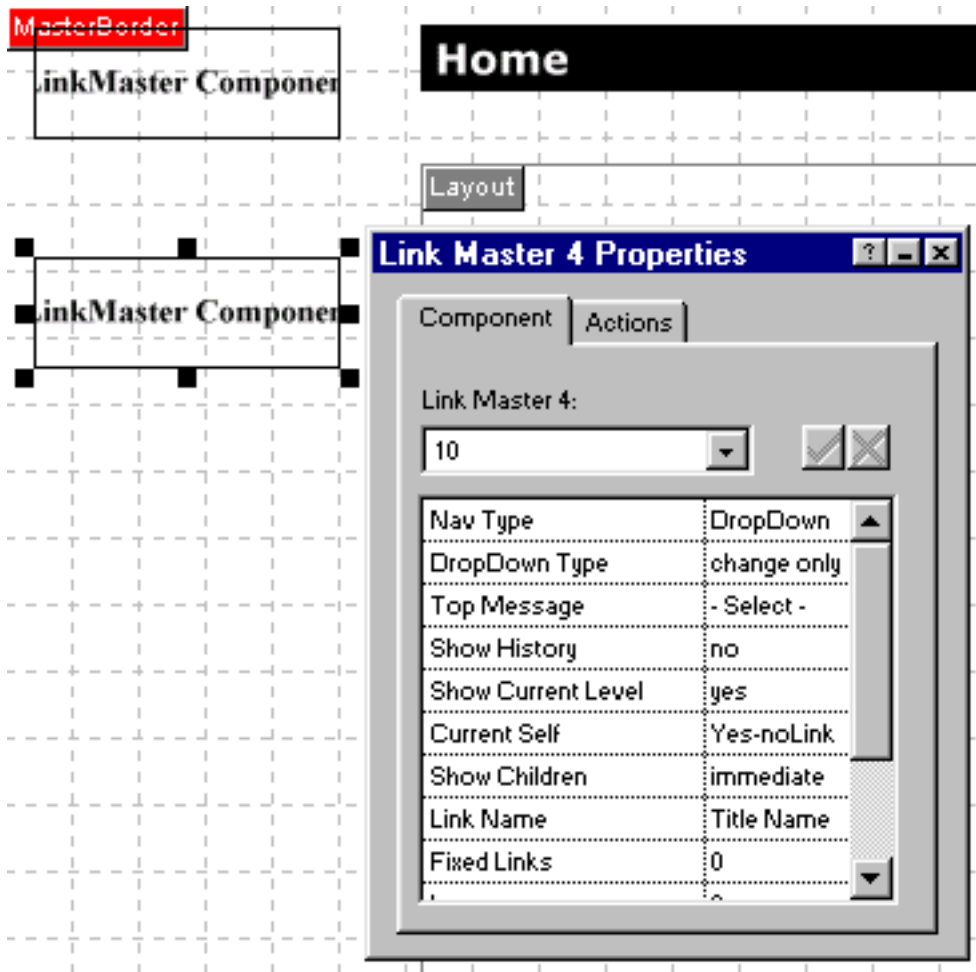
Below is our site view in Fusion's Site View. Can we apply custom navigation, both as text and dropdown to the entire site by working on only one page? Sure! :-)



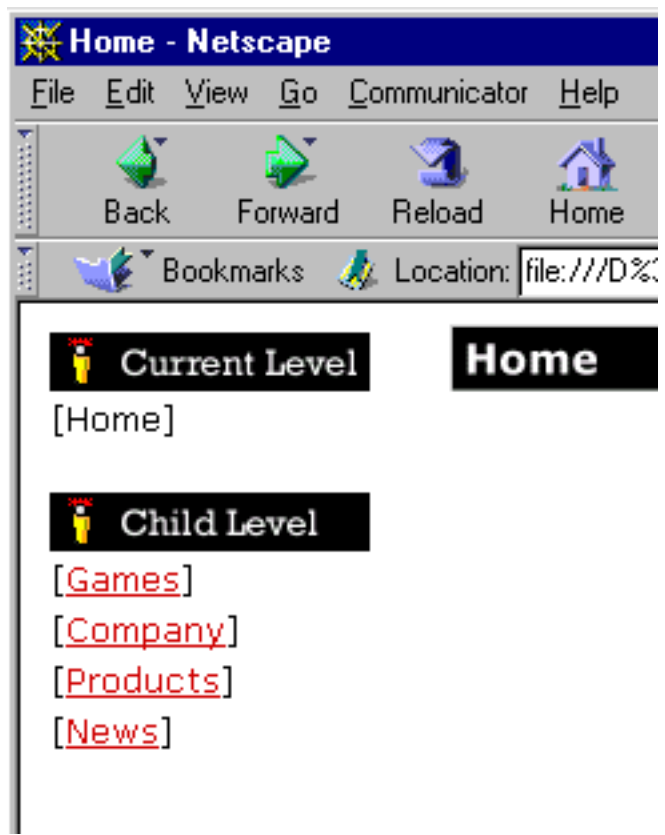
## 2. Page View

While LinkMaster can be placed in the Layout region of a page, it is far more powerful when used in MasterBorders.

Below we have placed two LinkMaster components in the MasterBorder that is being applied to the entire site. One LinkMaster is configured as a TextBar, the other as a DropDown.



3. Publish the Site.  
 Once configured, it's as easy as Publishing the site! Voila,  
 Navigation complete!



## DropDown Options

The real power of LinkMaster 4.0 comes from its many options. It gives you full control of what links are displayed, in what order, with what names, headings, graphics



and more!

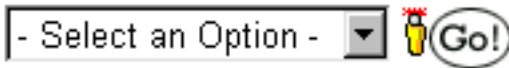
With the Nav Type set to DropDown (the first option in the Properties Palette) the following options are available:

### DropDown Type

**button only, change only, button and change**

Select the action that the user will perform to go to the selected link. e.g. Button only - user must click a 'go' button.

If you select an option that includes button, you will then be able to select from a standard form button, defining the text on it, or you can use your own custom image as the Go Button!



### Top Message

Define the message that will appear at the top of the DropDown. By default it is set to '--Select--', enter your own value in the field at the top of the palette.

### Show History

**yes, no**

This is a great feature of LinkMaster that allows you to create a Link History, giving your user a sense of where they are, and an easy way to navigate through many levels in one click.

With this option selected you can then choose if the link in History for the current page will appear and be active through Parent Self - no, yes, yes-nolink

### Show Current Level

**yes, no**

Choose if you would like all Pages on the current level of the site tree to be displayed.

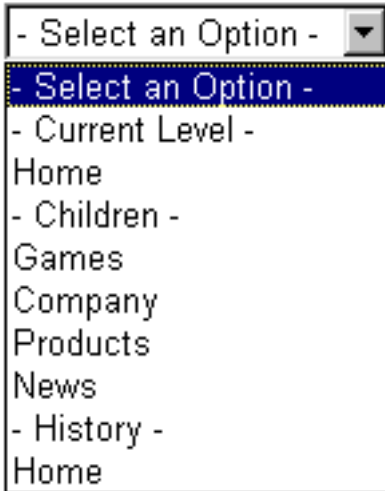
If you select yes, a second option Current Self (no, yes, yes-nolink) available. When you are on the current page, you can choose if that link appears at all, or if it will be linked if it does appear.

### Show Children

**all, immediate, no**

For each page you can select how many child pages beneath it will appear in the DropDown. All will display every page

beneath the current page. Immediate displays the next level down. No displays no child pages at all.



**Link Name**

**Page Name, Banner Name, Title Name, Button Name**

You can control which name will be used for each page. This is very powerful, as you can set custom values for each of these, via Fusion's Custom Name (Page View > Edit > Custom Names)

**Fixed Links**

**yes, no**

Fixed Links allow you to add any specified link, internal or external to the DropDown.

When selected, you are also given the option of giving Custom Names (yes, no) to each Fixed Link!

**Ignores**

**yes, no**

Often on larger sites constructing a site tree that is perfectly suited to automated navigation is very difficult. LinkMaster 4.0 gives you the option to set pages that will be ignored when the navigation is created!

This very powerful feature is not to be confused with the Fusion 'Don't Publish' option.

**Section #**

Section # allows you to sort the order the groups of links will appear in, in the DropDown. Depending on the options you have chosen up to three Sections will be available. Click through the sort options for each Section.

**Target**

Especially useful when using Autoframes, you can determine which location the link page will appeared in.

**Font Size**

Set the font size that will be used in the DropDown. Not all browsers support this setting.



## Text Bar Options

When the Text Bar option is selected, LinkMaster will automatically create a complete site navigation scheme! You have FULL control over what the Text Bar includes and how it is displayed...

### Direction

horizontal, vertical

Set whether the Text bar will run across the page, similar to the default navigation NOF places across the bottom of each page, or vertically. e.g

History - [[Home](#)] [[Products](#)] [Vegemite]

### Show History

yes, no

This is a great feature of LinkMaster that allows you to create a Link History, giving your user a sense of where they are, and an easy way to navigate through many levels in one click.

With this option selected you can then choose if the link in History for the current page will appear and be active through Parent Self - no, yes, yes-nolink - see above eg.

### Show Current Level

yes, no

Choose if you would like all Pages on the current level of the site tree to be displayed.

If you select yes, a second option Current Self (no, yes, yes-nolink) available. When you are on the current page, you can choose if that link appears at all, or if it will be linked if it does appear.

### Show Children

all, immediate, no

For each page you can select how many child pages beneath it will appear in the Text Bar. All will display every page beneath the current page. Immediate displays the next level down. No displays no child pages at all.

### Link Name

Page Name, Banner Name, Title Name, Button Name

You can control which name will be used for each page. This is very powerful, as you can set custom values for each of these, via Fusion's Custom Name (Page View > Edit > Custom Names)

### Fixed Links

yes, no

Fixed Links allow you to add any specified link, internal or external to the Text Bar.

When selected, you are also given the option of giving Custom Names (yes, no) to each Fixed Link!

Ignores  
yes, no

Often on larger sites constructing a site tree that is perfectly suited to automated navigation is very difficult. LinkMaster 4.0 gives you the option to set pages that will be ignored when the navigation is created!

This very powerful feature is not to be confused with the Fusion 'Don't Publish' option.

Section Breaks  
yes, no

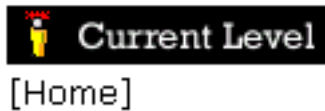
Select whether a space will occur between sections

Section Titles  
none, text, graphics

A great attention to detail feature. Create your own custom images and LinkMaster can use them as Section Titles. You can also choose Text (with custom values), or none.

Separator  
text, graphics, none

Another attention to detail feature that allows you to customize the look of the nav bar, by adding your own separator graphics or text.



Section #

Section # allows you to sort the order the groups of links will appear in the Text Bar. Depending on the options you have chosen up to three Sections will be available. Click through the sort options for each Section.

Target

Especially useful when using Autoframes, you can determine which location the link page will appeared in.

Font Size

Set the font size that will be used in the DropDown. Not all browsers support this setting.

**Bold**  
true, false  
Select bold text

**Italic**  
true, false  
Select italic text

**Site Font Style**  
Choose Font and Color drawn from the current Site Style or custom values.

**Brackets**  
No more default Fusion Brackets! Select from a range of styles to suit your site, including none!



### Tips & Tricks

LinkMaster 4.0 is a very powerful component. Used well, it can save you an enormous amount of time, especially as your site grows.

**Tip 1**  
Use MasterBorders! While LinkMaster works well in the Layout Area of page, eg as a single dropdown, place it in a MasterBorder to see it really work!

**Tip 2**  
Design your site with more than one MasterBorder and use more than one LinkMaster per site.

For example, at each level (each level with its own MasterBorder) you may have one LinkMaster across the bottom of the page showing History, another elsewhere as a main navigation Text Bar or DropDown.

**Tip 3**  
Layout your Site Tree to maximize the potential of LinkMaster. Use Place holder pages, and pay attention to Relationships between pages. Spend a small amount of time early to save a lot of time later on.