



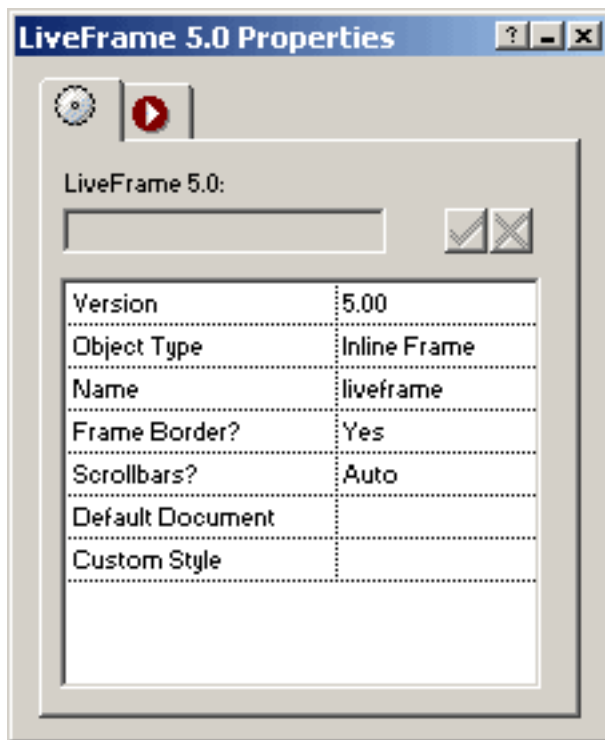
Getting Started with LiveFrame

With LiveFrame, quickly and easily add an HTML inline frame to your web page. Inline frames can be used to load other web pages and files from both internal and external sources.

Getting started with LiveFrame is easy!

- Run the installation program. Check the box next to the version(s) of Fusion that you have installed on your machine (4/5/MX/7).
- Launch Fusion.
- If the coolmaps.com component toolbar is not visible choose View > Toolbars > Component Tools > coolmaps basic
- Select the LiveFrame component and drag it out to an area on the page.

The LiveFrame Properties now appear in Fusion's properties palette.



LiveFrame Options

Version

Property field displays the version number of the component—non changeable.

Object Type

There are two types of objects the LiveFrame component can represent: the Inline Frame, which is the "window" portion; and the Link, which can be used to target new content to open in an inline frame. Select the type of object you want to implement.

Inline Frame

Name

Enter a name for the inline frame. The name is used for internal referencing and link targeting. **THIS IS NOT THE PAGE TITLE!**

Frame Border?

Select whether to have a 3D border around the frame.

Scrollbars?

Select whether the frame should have scrollbars if content exceeds size of frame.

Default Document

Optionally, specify an initial page to load into the frame. Page can be internal/external/file.

Custom Style

Use custom CSS attributes to change the look of the frame.

Link

Image/Text

Select to have an image link or text link.

Image:

Link Image

Select in an image for the link.

Text:

Link Text

Enter text for the link.

Link

Select a link to load into a LiveFrame.

Link Target

Enter the Name of a LiveFrame inline frame object in which the link will be loaded.