




MetaMorph 7.0

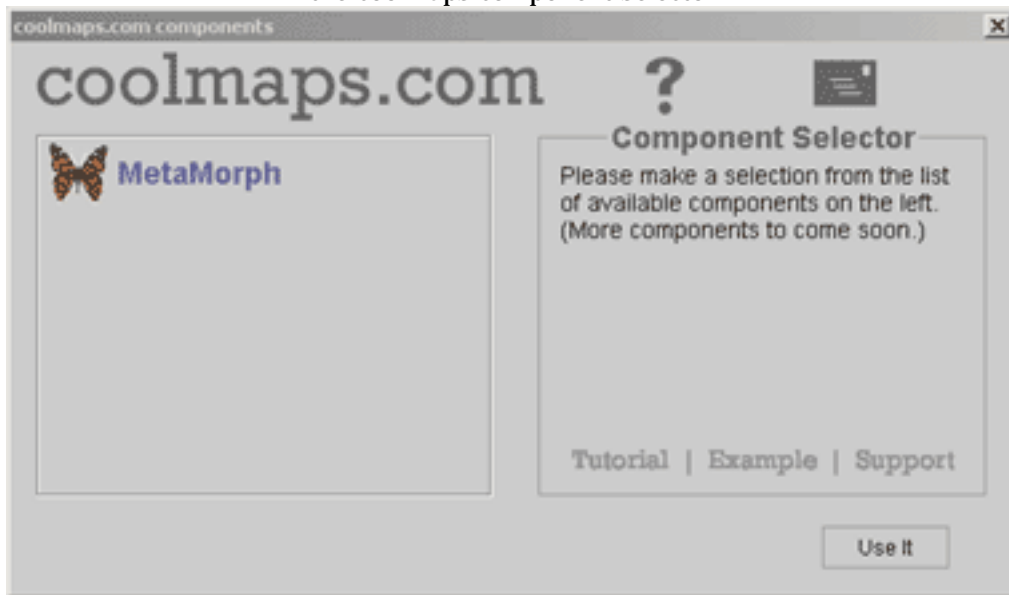
Getting Started with MetaMorph

With MetaMorph, easily enable flashy page transitions on your site. Transitions can occur on page enter and/or on page exit.

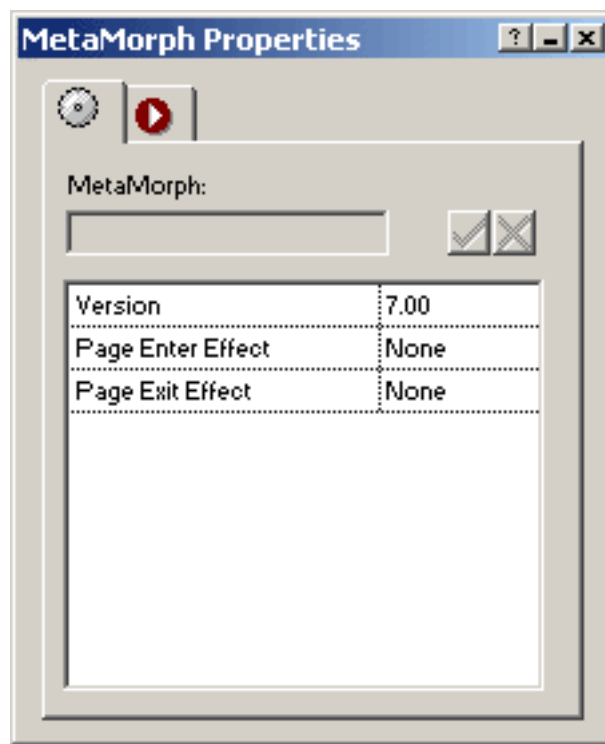
Getting started with MetaMorph is easy!

- Run the installation program. Check the box next to the version(s) of Fusion that you have installed on your machine (4/5/MX/7).
- Launch Fusion.
- If the coolmaps.com component toolbar is not visible choose View > Toolbars > Component Tools > coolmaps
- Select the coolmaps component selector  and drag it on your page.
- In the coolmaps component selector, select MetaMorph and click the "Use It" button.

the coolmaps component selector



The MetaMorph Properties now appear in Fusion's properties palette.



MetaMorph Options

Version

Property field displays the version number of the component—non changeable.

Page Enter Effect

Select a page enter effect. If an effect is selected, an additional field, Page Enter Duration, displays on the palette and allows you to specify, in seconds, how long the transition should last.

Page Exit Effect

Select a page exit effect. If an effect is selected, an additional field, Page Exit Duration, displays on the palette and allows you to specify, in seconds, how long the transition should last.

Note: MetaMorph applies page transitions to only the pages it resides on. For site-wide implementation, the component is best placed in the MasterBorder(s).