




Getting Started with MouseTrap

MouseTrap is a NetObjects Fusion v4/5 compatible component that allows you to easily create a range of DHTML Mouse Trail effects! The Trail effects included in MouseTrap are:

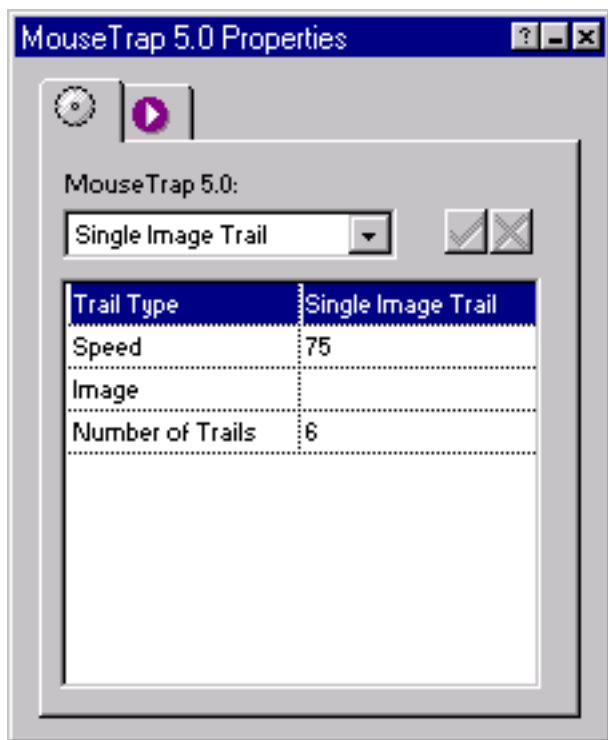
- Single Image
- Multi Image
- Flying Text

 Download MouseTrap Movie featuring the three MouseTrapTrails [here](#) (37k)

Getting started with MouseTrap 5.0 is easy!

- Run the Installation program, specifying the location of Fusion v4.0/5.0's component directory.
- Launch Fusion v4.0/5.0
- If the coolmaps.com component toolbar is not visible choose View > Toolbars > Component Tools > coolmaps.com basic
- Select the MouseTrap component and drag out an area on the page.

MouseTrap Properties now appear in Fusion's Properties palette.



MouseTrap Options

MouseTrap 5.0 ships with 6 trail graphics to help get you started. The graphics are located in:

[NetObjects Fusion */Components/Coolmaps/](#)
and are named trail1.gif > trail6.gif.

MouseTrap requires version 4 or above browsers for the Trails to work.

MouseTrap 1 - Single Image Trail

- Speed
Default set to 75. Modify and test.
- Image
Browse to image
- Number of Trails
Set number of times image repeats and trails the mouse

MouseTrap 2 - Multi Image Trail

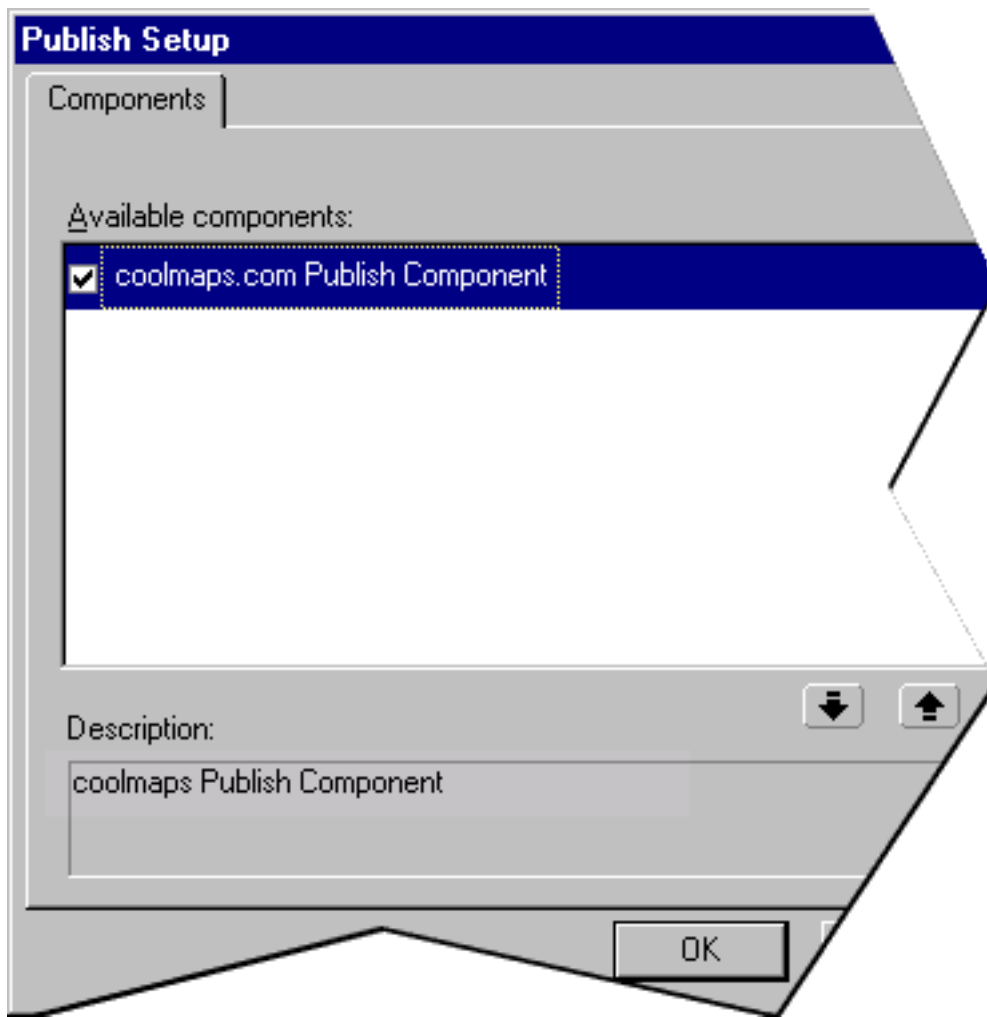
- Speed
Default set to 75. Modify and test.
- Number of Trails
Set number of images that will trail the mouse.
- Image #n
Browse to image(s).

MouseTrap 3 - Flying Text

- Speed
Default set to 75. Modify and test.
- Text Message
Enter text.
- Font Size (9, 10, 12, 14, 16, Custom)
Select size for Flying Text. Use the 'custom' option to specify a value not included in the dropdown.
- Font Family (Arial, Times, Courier, Georgia, Verdana, Custom)
Select font for Flying Text. Use the 'custom' option to specify a value not included in the dropdown.
- Font Weight (normal, bold, bolder, lighter, Custom)
Select font weight for Flying Text. Use the 'custom' option to specify a value not included in the dropdown.
- Font Color
Choose color from color picker.

Once the palette options are configured, the coolmaps.com Publish Component must be enabled.

- Choose Publish View > Publish > Publish Components
- Check 'coolmaps.com Publish Component'



Don't see the coolmaps.com Publish Component listed? Get it [here!](#)