

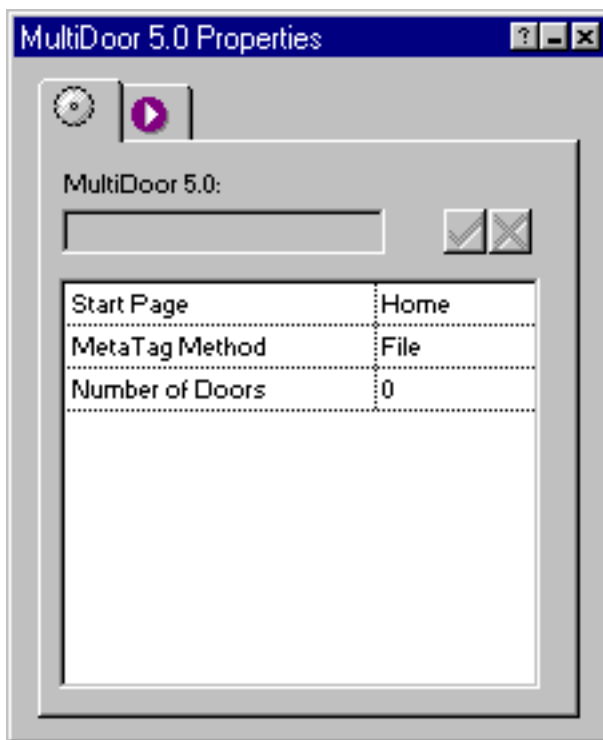


Getting Started

MultiDoor 5.0 allows you to easily publish multiple entrances into your site without ever leaving Fusion. Each entrance page gets its own title and meta tags, allowing you to customize your entries for different search engines.

- Run the Installation program, specifying the location of Fusion 4.0/5.0's component directory.
- Launch Fusion
- If the coolmaps.com component toolbar is not visible choose View > Toolbars > Component Tools > coolmaps.com components
- Select the MultiDoor component and drag out an area on the page (this graphic does not appear on the published page).
- NB: Only place the MultiDoor component in the Layout area, not the Masterborder.

The MultiDoor properties now appears in Fusion's properties palette.



MultiDoor is a two part component. Once you have configured the options in the Properties Palette, you must enable the Post Publish MultiDoor component (Publish > SetUp)

MultiDoor Options

Start Page

The component will automatically fill in this field when the it is placed on the page. e.g. If the component is placed in the Layout area of the Home Page, the field will read 'Home'. This field assists in the clean removal of the component from the nod file should you choose not to use MultiDoor.

MetaTag Method (Palette/File)

Each door can have custom metatags inserted either directly into the Properties Palette or drawn from a text file. Select the option you prefer.

Number of Doors

Specify the number of Doors you would like the component to create. Each Door has the following options:

- Name
This will be the file name given to the door
- Title
This will be the title that appears when the door is loaded into a browser

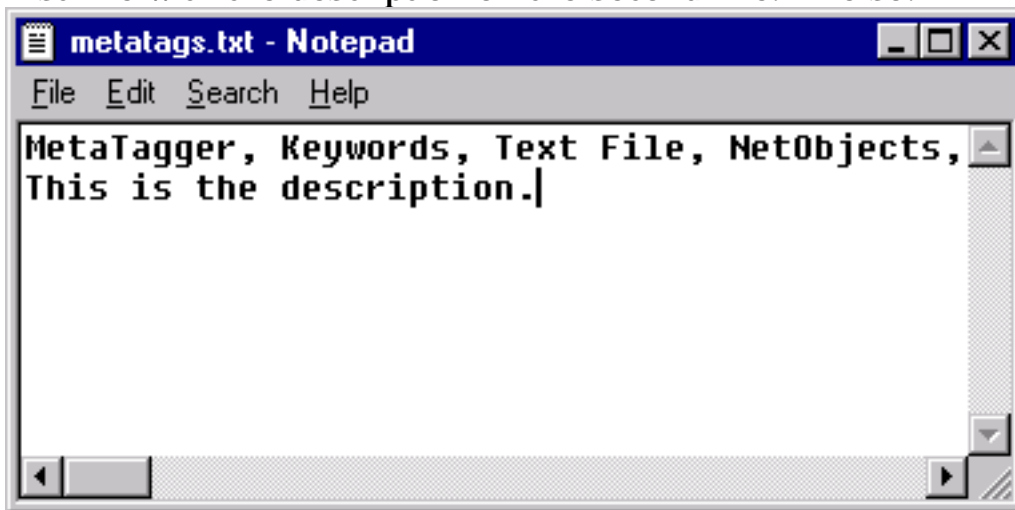
Palette only options

- Door # Keywords
Enter the meta keywords for the door.
- Door # Description
Enter the meta description for the door.

File only option

- Door # File
Double click on this field and browse to the text file containing the keywords and description you would like inserted into the door.

The text file should be formatted so that the keywords are comma seperated on the first line with the description on the second line. Like so:



Once the Palette options are configured the Post Publish MultiDoor component must be enabled.

Choose Publish View > Publish > Publish Components and check the MultiDoor option.

