



Getting Started with MusicBox

MusicBox is a NetObjects Fusion v4/5 compatible component that gives you advanced control of MIDI and WAV files.

With MusicBox you can easily create custom graphic-based control panels that allows the site visitor to load multiple files into the one player.

MusicBox searches through installed plugins (e.g. Beatnik, Crescendo, Media Player) and uses the first available.

Note: Because QuickTime plugin is not script-friendly users with the QuickTime plugin installed will not be able to use MusicBox.

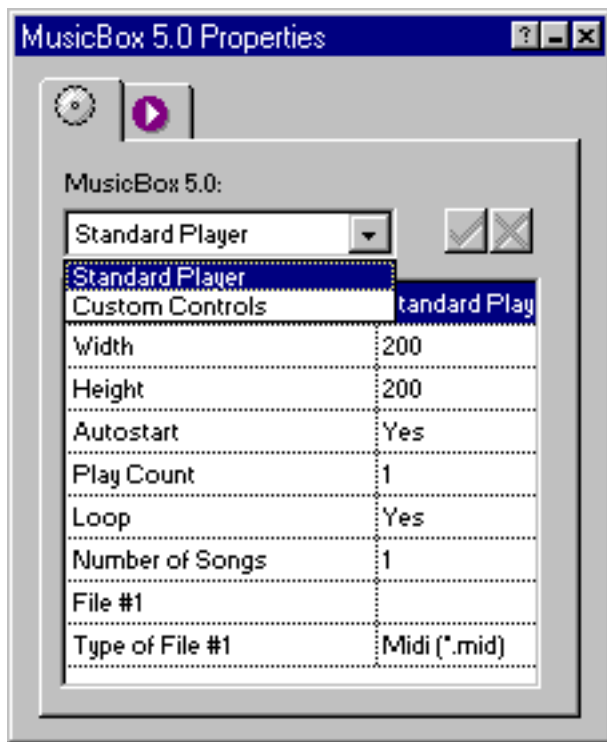
View MusicBox in Action here!

 Download the 'Getting Started with MusicBox' Movie [here](#) (800k)

Getting started with MusicBox 5.0 is easy!

- Run the Installation program, specifying the location of Fusion v4.0/5.0's component directory.
- Launch Fusion v4.0/5.0
- If the coolmaps.com component toolbar is not visible choose View > Toolbars > Component Tools > coolmaps.com advanced
- Select the MusicBox component and drag out an area on the page.

MusicBox Properties now appear in Fusion's Properties palette.



MusicBox Options

MusicBox can be used in two 'modes':

- Standard Player - The player is visible on the page. You can set the width and height. You can also have graphic controls on the page that replicate player functions as well as loading multiple tracks into the player
- Custom Controls - The player is not visible on the page. Graphic controls that replicate player functions as well as loading multiple tracks into the invisible player are placed on the page.

Questions? Download the 'Getting Started with MusicBox' Movie [here](#) (800k)

Note: Because QuickTime plugin is not script-friendly users with the QuickTime plugin installed will not be able to use MusicBox.

View MusicBox in Action here!

Standard Player Options

With Standard Player selected as the first option in the Properties Palette the following options are available:

- Width (pixels) - Enter width of player. Note that size of the published player is controlled by the Palette, not by resizing the placeholder graphic.
- Height (pixels) - Enter height of player. Note that size of the published player is controlled by the Palette, not by resizing the placeholder graphic.
- AutoStart (yes/no) - Determines if track 1 will begin playing automatically when the page loads.
- PlayCount (0,1,2,3 etc) - Set to 0 (zero) to loop continuously in MSIE. Higher values will play the track that number of times.
- Loop (yes/no) - Netscape attribute for continuous looping.
- Number of songs (1,2,3 etc) - specify number of tracks to be loaded into player by site visitor. Browse to locate your midi files.

NOTE : You must choose Show all Files *.* from the Type of File dropdown for your Midi files to be visible.

Custom Controls Options

With Custom Controls selected as the first option in the Properties Palette the following options are available:

- Drop Item > Invisible Player - When Invisible Player is selected the same player options as above are available, minus the Height and Width attributes.
- Drop Item > Custom Button - When Custom Button is selected the following options are available:
 - Button Function
 - Play - plays track when clicked
 - Pause - pauses track when clicked
 - Stop - stops track when clicked
 - Decrease Volume - drops volume when clicked
 - Increase Volume - increase volume when clicked.
NOTE : Increase volume will stop track playing if volume is already set to full volume.
 - Set Full Volume - sets full volume when clicked
 - Load Song... - An additional 'Song Number' option available. This value should correlate with the 'Number of Songs' you've specified for the Player.
 - Button Image - Browse to the image you'd like to use for each function. MusicBox ships with default control graphics. They are located in your Fusion/Components/Coolmaps directory.

 Questions? Download the 'Getting Started with MusicBox' Movie [here](#) (800k)

MusicBox Usage Notes

To get the most from your MusicBox component:

- When browsing to locate your Midi or Wav files you must choose 'Show all Files *.*' from the Type of File dropdown for your Midi/Wav files to be visible.
- Only place one MusicBox player per page.
- Because QuickTime plugin is not script-friendly users with the QuickTime plugin installed will not be able to use MusicBox.
- Volume controls for Live Audio do not function, this is not a component problem, but a glitch with Live Audio.

For additional information:

- [MusicBox FAQs](#)
- [MusicBox Known Issues](#)
- [Component Support newsgroup](#)