



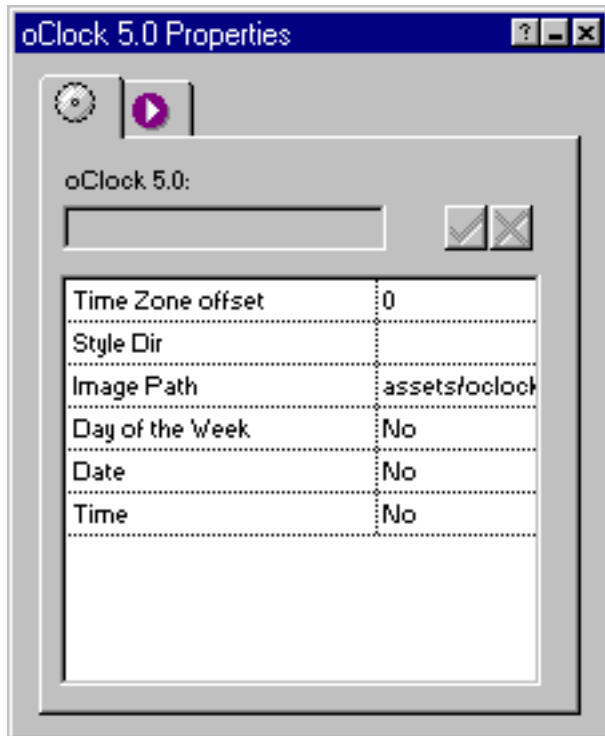
## Getting Started with OClock

OClock lets you put a date/time digital clock onto your page. You can set the time to any time zone. Users will see the current time in your time-zone, not the current time in theirs.

Getting started with the OClock:

- Run the Installation program, specifying the location of Fusion 4.0/5.0's component directory.
- Launch Fusion
- If the coolmaps.com component toolbar is not visible choose View > Toolbars > Component Tools > coolmaps.com components
- Select the OClock component and open an area on the page.

The OClock properties now appears in Fusion's properties palette.



## OClock Options

### Time Zone offset

To make sure OClock is in sync with your local time, you are asked to enter your Time Zone offset relative to GST.

Find out your Time Zone offset at:

[http://club.coolmaps.com/tutorial\\_oclock2.cfm](http://club.coolmaps.com/tutorial_oclock2.cfm)

### Style Dir

Choose any of the .gif files located in the OGraphics folder. In a normal installation these .gifs can be found by the path:  
NetObjects 4.0/Components/coolmaps/OGraphics

### Image Path

You may leave this set to: "assets/oclock"

You may now choose what you want displayed on your clock:

Day of Week: yes/no

Date: yes/no ;

(if yes choose US format or International format)

Year: yes/no

Time: yes/no

Seconds: yes/no