



OnTime 5.0

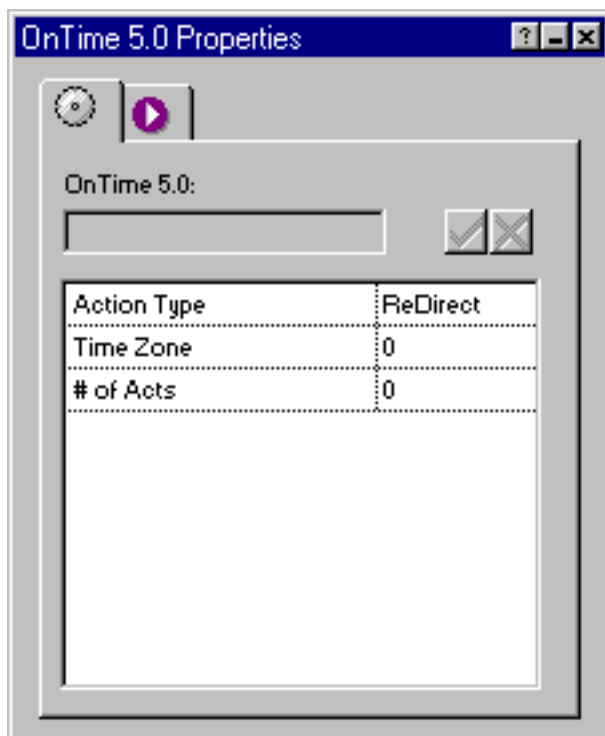
Getting Started

OnTime let's you schedule images and/or pages to appear based on the time of day, day of the week, even for weekends only! OnTime can update your site while you sleep in!!!

Getting started with the OnTime:

- Run the Installation program, specifying the location of Fusion 4.0/5.0's component directory.
- Launch Fusion
- If the coolmaps.com component toolbar is not visible choose View > Toolbars > Component Tools > coolmaps.com components
- Select the OnTime component and drag out an area on the page (this graphic does not appear on the published page).

The OnTime properties now appears in Fusion's properties palette.



OnTime Options

OnTime has two main Actions:

- Redirect
- Image

Once selected, the Properties Palette fills with applicable options.

Redirect Options

Redirect Acts allows you to specify pages to appear at chosen time/day intervals.



Time Zone

To make sure OnTime is in sync with your local time, you are required to enter your Time Zone offset relative to GST.

Find out your Time Zone offset at:

http://club.coolmaps.com/tutorial_ontime2.cfm

of Acts

Specify the number of Acts you wish to implement.

Note, you must set a begin and end time for each Act in a single day. If you want a page to start at 6 at night and go on to 8 the next morning, you would need 2 acts (18:00 to 24:00 and 00:00 to 08:00).

Also, for redirects, if no Act is active, users will remain on the current page.

The below options are repeated for each Act.

Day of Week

Select the Day of the Week you would like to Act to occur.

TIP: remember you can select via the dropdown, or double click through the options in the palette.

Start Time

Enter the time you would like the Act to start. Time must be entered in the 24 hour format. e.g. 08:30, 23:30

End Time

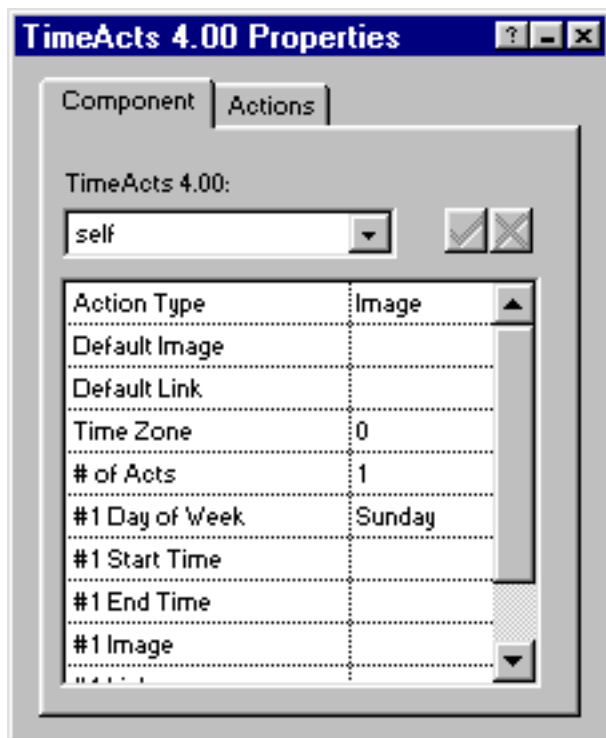
Enter the time you would like the Act to finish. Time must be entered in the 24 hour format. e.g. 08:30, 23:30

Page

Select the Page that will be displayed for the above Act period.

Running OnTime

Image Acts allow you to specify images to appear in pages at chosen time/day intervals.



Default Image

Specify the image that will appear outside of the specified Acts intervals.

Default Link

Specify the hyperlink of the Default image.

Time Zone

To make sure OnTime is in sync with your local time, you are required to enter your Time Zone offset relative to GST.

of Acts

Specify the number of Acts you wish to implement.

Note, you must set a begin and end time for each Act in a single day. If you want a page to start at 6 at night and go on to 8 the next morning, you would need 2 acts (18:00 to 24:00 and 00:00 to 08:00).

For images, if no Act is active, users will see the default image.

The below options are repeated for each Act.

Day of Week

Select the Day of the Week you would like to Act to occur.

TIP: remember you can select via the dropdown, or double click through the options in the palette.

Start Time

Enter the time you would like the Act to start. Time must be entered in the 24 hour format. e.g. 08:30, 23:30

End Time

Enter the time you would like the Act to finish. Time must be entered in the 24 hour format. e.g. 08:30, 23:30

Image

Specify the image to appear for the above period.

Link

Specify the image that will appear outside of the specified Acts intervals.

Target

Specify the target of all Image Act links.