



PleaseHold 5.0

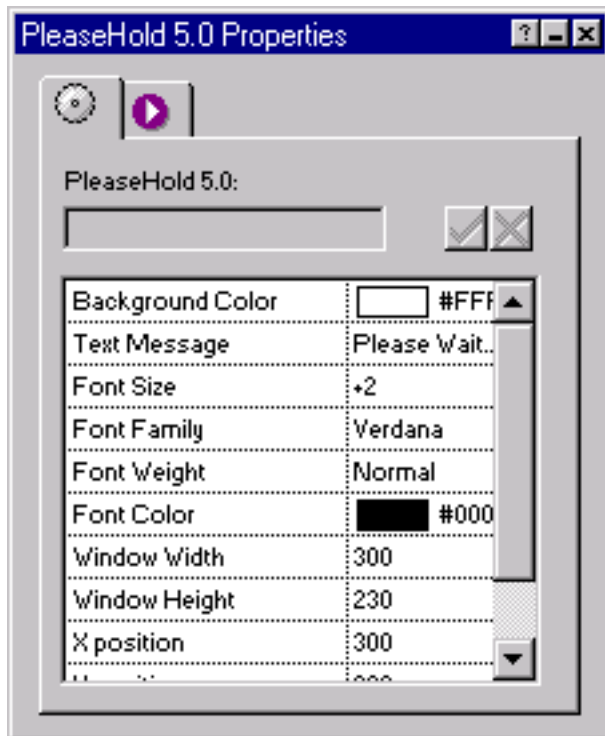
Getting Started with PleaseHold

Configured from the Properties palette in page view, PleaseHold 5.0 adds a customizable, page-loading, pop-up window to any page. Visit the [details](#) page for a more detailed description and examples.

Getting started with PleaseHold 5.0 is easy!

- Run the Installation program, specifying the location of Fusion v4.0/5.0's component directory.
- Launch Fusion v4.0/5.0
- If the coolmaps.com component toolbar is not visible choose View > Toolbars > Component Tools > coolmaps basic
- Select the PleaseHold component and drag out an area on the page

The PleaseHold Properties now appear in Fusion's Properties palette.



PleaseHold Options

Background Color - Background color of pop-up window. Use Fusion's color picker to select a color.

Text Message - Message to display in the pop-up window. Within this field, feel free to use HTML to better format the text. An example would be to use the
 tag to specify a line break in the text.

Font Size - Font size of the text in the pop-up window.

Font Family - Choose from the list of Fonts, or enter a custom font by choosing "Custom..." If you choose to enter a custom font, enter it in the "Custom Family" field.

Font Weight - Choose from Normal, Bold, Italic, or Underlined.

Font Color - Use Fusion's color picker to select a font color.

Window Width - In pixels, the width of the pop-up window.

Window Height - In pixels, the height of the pop-up window.

X position - X screen coordinate of the pop-up window's upper left hand corner.

Y position - Y screen coordinate of the pop-up window's upper left hand corner.

Timer - The timer is used for keeping the window open for a minimum amount of time. If you choose to use the timer, enter the minimum length of time in the "Time in seconds" field.