

PopRocket 5.0

Getting Started

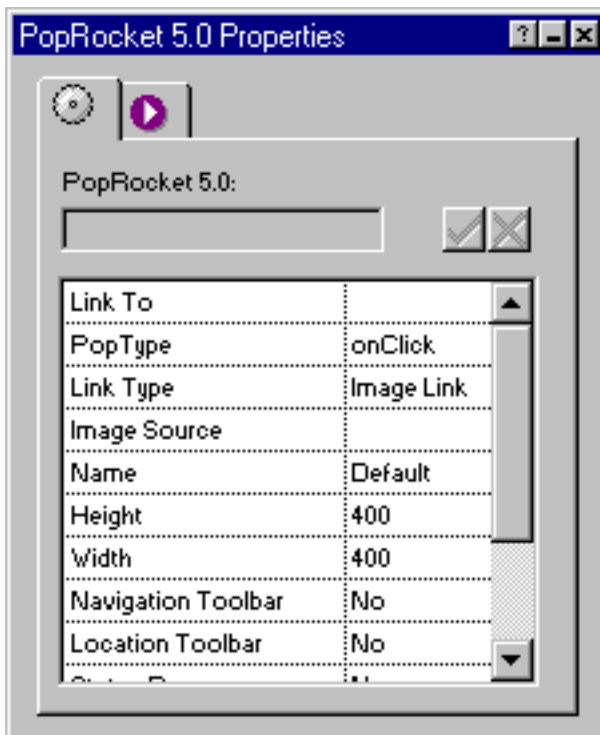
PopRocket 5.0 lets you to create Popup windows quickly and easily, launching them on click or MouseOver. It even lets you close the window on MouseOut. It is compatible with Fusion v4.0/5.0.

NEW in v5! To improve performance the java Options window has been replaced with Palette based options.

Getting started with the PopRocket:

- Run the Installation program, specifying the location of Fusion 4.0/5.0's component directory.
- Launch Fusion
- If the coolmaps.com component toolbar is not visible choose View > Toolbars > Component Tools > coolmaps.com components
- Select the PopRocket component and drag out an area on the page (this graphic does not appear on the published page).

The PopRocket properties now appears in Fusion's properties palette.



Options & Demos

The options found in the PopRocket Properties Palette include:

Link to
browse to or select a page that will appear in the popup window.

PopType > onClick

The PopUp must be launched by a click, either on a text link, graphic or fauxgraphic

PopType > onMouseOver

The PopUp will be launched when the user mouses over the specified text, graphic or FauxGraphic.

A secondary True/False option is available for MouseOver.

When set to TRUE it will close on MouseOut.

When set to FALSE it will remain open on MouseOut.

PopType > onLoad

The PopUp will be launched as the page loads. If this option is selected, the Link Type option will not be available.

Link Type > Image Link

When Image Link is selected another field appears. Use this field to browse to the image that will launch the popup when clicked. The image then appears in page view.

Link Type > Text Link

When Text Link is selected several additional field appears:

- Custom Text
The text that will launch the popup when clicked
- Use Custom Font?
If a font different from that of the current context of the component is desired, select "Yes" and configure the below font options. If the font specified in the current context of the component should be used, select "No". Note: Font context can be defined seperately from the component by placing the component within a text region.
 - Font Style
Select a font face
 - Font Color
Select a font color
 - Italics
yes/no
 - Size
8 to 36
 - Bold
yes/no

Link Type > FauxGraphic

PopRocket 5.0 integrates with FauxGraphic 5.0 - a component that allows you to generate psuedo graphics based on text and tables.

Refer to the [FauxGraphic](#) Tutorial for further information.

Other Options

The following list are the attributes you can set for the popup window.

- Name
Used by the browser to internally identify the window. Name should have no spaces or odd characters.
- Height
Popup window height.
- Width
Popup window width.
- Navigation Toolbar (yes/no)
Display navigation toolbar in popup window.
- Location Toolbar (yes/no)
Display location toolbar in popup window.
- Status Bar (yes/no)
Display status bar in popup window.
- Menu Bar (yes/no)
Display menu bar in popup window.
- Scroll Bar (yes/no)
Enable scroll bars in popup window.
- Resize Handles (yes/no)
Allow popup window to be resized by user.

New in v5.02 and later!

Use the Custom Positioning option in the properties palette to specify exact coordinate values for the popup window. Set the Left and Top values as desired.

Be sure to see our [PopRocket Component Spotlight](#).