



# QuickDrop 5.0

## Getting Started with QuickDrop

Have you ever had to create a dropdown form of Countries of the World, States of the USA or any other long list in Fusion?



QuickDrop is a powerful component that populates dropdowns automatically with the contents of the text file of your choice. BIG dropdowns? It's all done in a matter of seconds with QuickDrop.

Quickdrop Feature Highlights include:

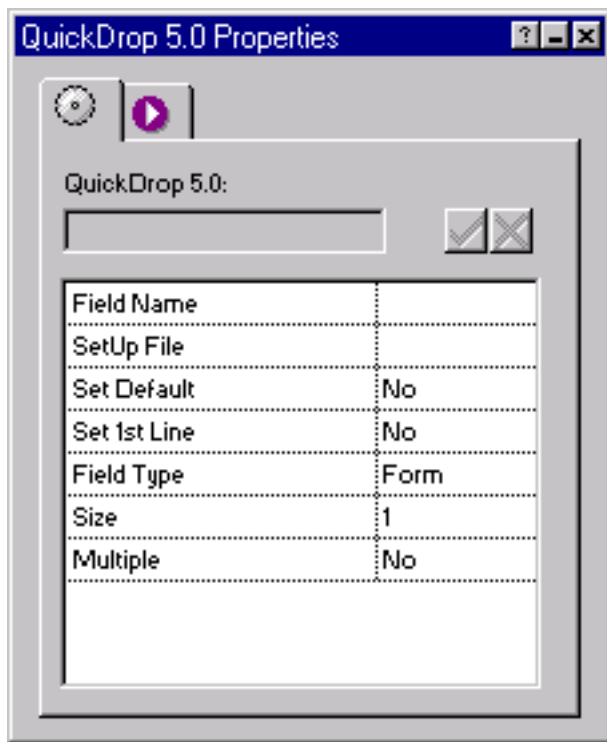
- 'SetUp' files Countries of the World and States of the USA included
- Create, edit and share your own QuickDrop text files in any text editor!

- Act as a 'Go' dropdown or standard form dropdown
- Set default selected value, and first line
- Control height of dropdown
- Single or multiple select

Getting started with QuickDrop 5.0 is easy!

- Run the Installation program, specifying the location of Fusion v4.0/5.0's component directory.
- Launch Fusion v4.0/5.0
- Place a Layout Region on the page
- Check the "Layout Region is a Form" button
- If the coolmaps.com component toolbar is not visible choose View > Toolbars > Component Tools > coolmaps.com components
- Select the QuickDrop component and drag out an area in the Form Layout Region (this graphic does not appear on the published page).

The QuickDrop Properties now appear in Fusion's Properties palette.



### QuickDrop Options

QuickDrop options allow you to quickly and easily configure large dropdowns.

#### Field Name

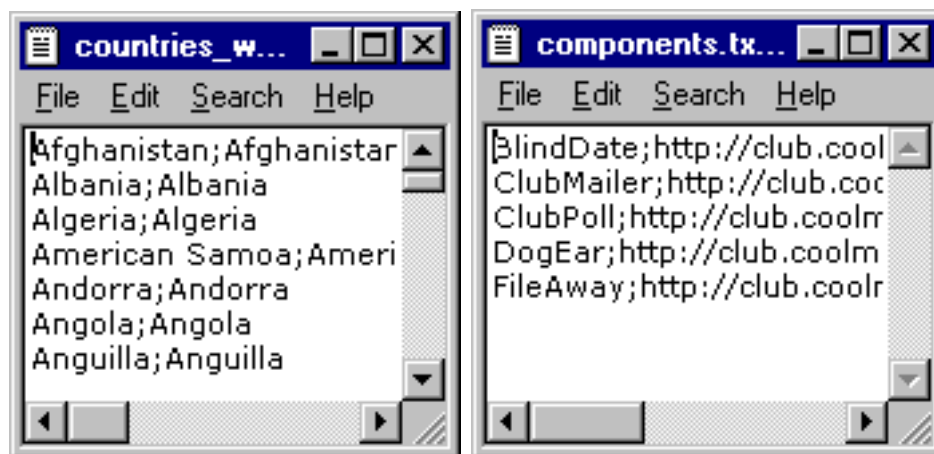
Enter the name of the dropdown that will be passed to the form action page.

#### SetUp File

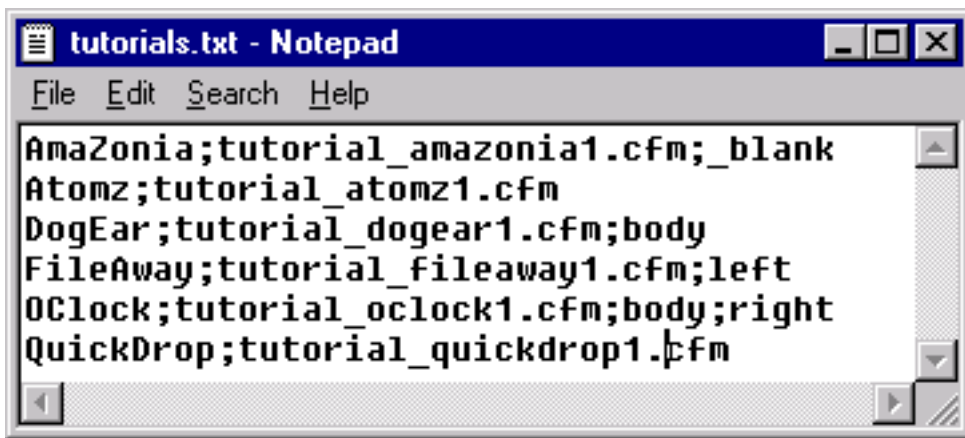
Browse to locate the text file that will populate your dropdown. Two text files are supplied with Quickdrop - countries\_world.txt and states\_USA.txt, both located in the same directory as your coolmaps components.

SetUp files can be created in any text editor - NotePad will do! To your left of the semi colon is what appears in the dropdown, to the right the value that gets passed.

NOTE - when QuickDrop is being used as a 'Go' menu values on the right are URL's.



The following is an example of a 'Go' menu that implements targeting. The target is to be specified after the URL, seperated by a semi-colon.

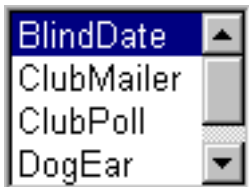


The target can either be a frame name so that the link will open in that frame or a name of a window that you wish to open or that is already opened.

To open the link in a new window, specify any name you like as the target. Just keep the name short, no spaces, and no odd characters!

Set Default (yes/no)

When set to yes, allows you to set a default value that will be selected. e.g. if the bulk of your customers are from the USA, USA could be pre-selected from a countries of the world list.



In this example, BlindDate has been set as the default value, first line set to no, field type to form, size to 4, and multiple to no.

Set First Line (yes/no)

When set to yes, allows you to specify text that appears in the first line of your dropdown. e.g. Select Here -->>

Field Type (Form/GoTo)

When set to form QuickDrop acts as a standard form element with the visitor selecting a value and submitting the form elsewhere on the page, the selected value being passed.

When set to GoTo, QuickDrop acts as a Go menu - forwarding the site visitor to the location they've chosen from the dropdown.

The following option is only available if **Field Type** is set to "GoTo".

DropDown Type (Change/Button)

When set to Change, the visitor would be taken to the location they've chosen immediately upon selecting it from the list.

When set to Button, the visitor would be taken to the location they've chosen only after the button is clicked.

The following option is only available if **DropDown Type** is set to "Button".

Button Type (Form Submit/Custom Image)

When set to Form Submit, a normal form button will be used. To specify the text of the button, enter it into the Button Text field.

When set to Custom Image, an image can be selected to act as the button. Specify the custom image using the Custom Image field.

### Size

With either Form or GoTo selected 'size' can be specified, that is the height (or number of rows) of the dropdown element.

### Multiple (yes/no)

With Form selected the Multiple option is available. When set to 'no' the visitor can only select one value, when set to 'yes' the visitor can select multiple values.

Have you got a QuickDrop SetUp text file you'd like to share with other QuickDrop users? It may be States of your Country, cities in your State, anything! Email it to [clubmaster@coolmaps.com](mailto:clubmaster@coolmaps.com) and we'll make it available here.