



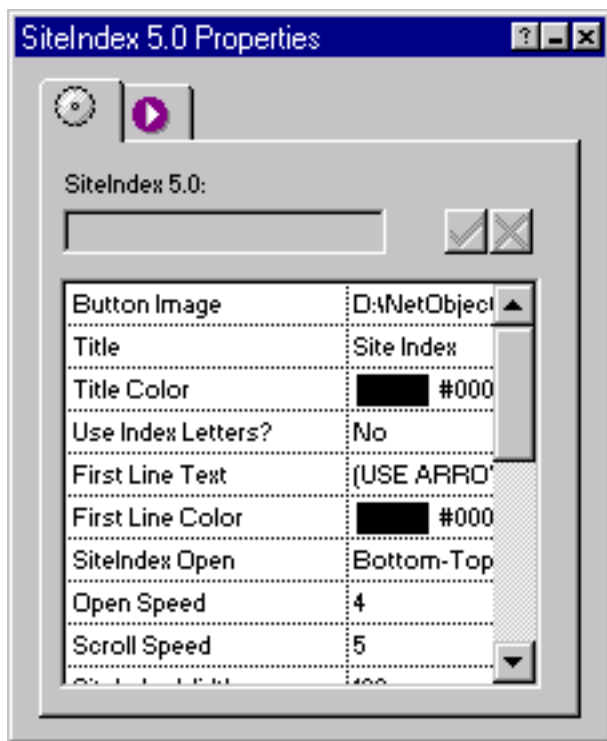
I Getting Started with SiteIndex

SiteIndex uses dynamic HTML to create a 'window' within a web page that holds a scrollable listing of all pages in the current site.

Getting started with SiteIndex 5.0 is easy!

- Run the Installation program, specifying the location of Fusion v4.0/5.0/MX's component directory.
- Launch Fusion v4.0/5.0/MX.
- If the coolmaps.com component toolbar is not visible choose View > Toolbars > Component Tools > coolmaps advanced
- Select the SiteIndex component and drag out an area on the page

The SiteIndex Properties now appear in Fusion's Properties palette.



The physical, published appearance of SiteIndex is in two parts:

The first part is the open/close button. The open/close button is what you'll see when the component is dropped on the page. The positioning of the button is determined by where you place it within the page layout.

The second part is the actual index that appears when the above mentioned button is clicked. Unlike the button, the location of the index is not determined by where you place the component on the page but where you specify it to appear by using X and Y page coordinates.

I SiteIndex Options

Button Image

The image to be used as SiteIndex's open/close button. Use Fusion's file opener to select an image.

Title

Text to be used as the title. The default is "Site Index".

Title Color

The title's font color. Use Fusion's color picker to select a color.

Use Index Letters?

Index letters categorize all pages by the first letter of the page name (just like an index!). If this option is selected, specify in the Letter Color field, the color of the index lettering.

First Line Text

If desirable, specify a first line of text. The default text is "(USE ARROWS TO SCROLL INDEX)".

First Line Color

Color of the first line text. Use Fusion's color picker to select a color.

SiteIndex Open

Specifies how SiteIndex will open. Choices are bottom to top, left to right, top to bottom, right to left, and all sides.

Open Speed

Speed at which the SiteIndex will open. The default is 4.

Scroll Speed

Speed at which the SiteIndex will scroll. The default is 5.

SiteIndex Width

In pixels, the width of SiteIndex.

SiteIndex Height

In pixels, the height of SiteIndex.

SiteIndex X

In pixels, the X-coordinate of SiteIndex.

SiteIndex Y

In pixels, the Y-coordinate of SiteIndex.

BackGround Color

Color of SiteIndex's background. Make sure the color is in contrast to the font color. Use Fusion's color picker to select a color.

Frame Color

Color of the SiteIndex's Frame. Use Fusion's color picker to select a color.

Font

The font to be used by SiteIndex. If "Custom Font" is chosen, enter it in the Custom Font field.

Font Color

Color of SiteIndex's text. Excludes title and first line text color. Use Fusion's color picker to select a color.

Font Size

Font size of SiteIndex's text. Excludes the title font size which is permanently set.

Link Name

Name that identifies your pages in SiteIndex. Use the standard page name or one of the custom set names (banner, title, or button).

Disabled Pages

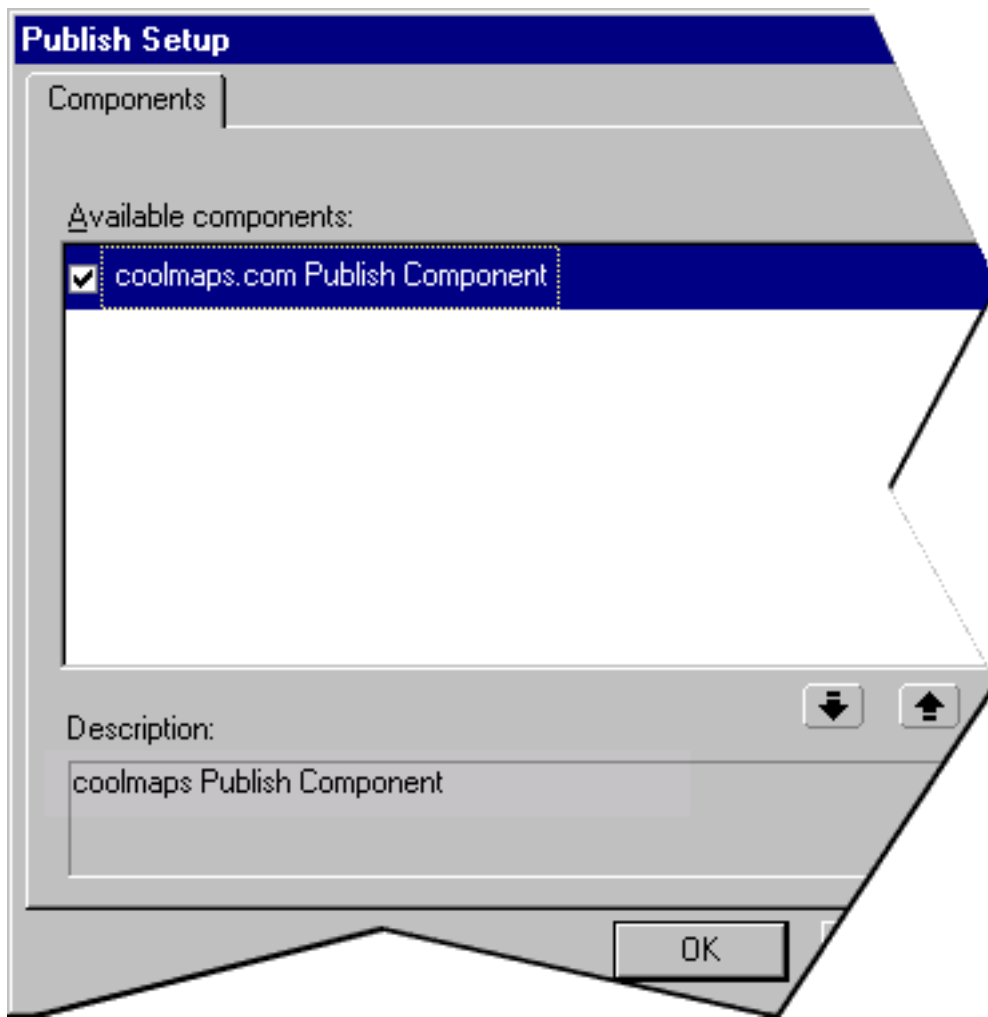
This option allows for pages to be excluded from SiteIndex. Specify the number of disabled pages you wish to have. In the Disabled #n field(s), use Fusion's link selector to specify the internal pages to be disabled.

External Pages

This option allows for pages external to your site to be included in SiteIndex. Specify the number of external pages you wish to have. In the External #n field(s), use Fusion's link selector to specify the external pages to be included. The asset name given to an external link will be used by SiteIndex in its listing.

Once the palette options are configured, the coolmaps.com Publish Component must be enabled.

- Choose Publish View > Publish > Publish Components
- Check 'coolmaps.com Publish Component'



Don't see the coolmaps.com Publish Component listed? Get it [here!](#)