



SiteMap 5.0

Getting Started with SiteMap

SiteMap is a NetObjects v4.0/5.0 component that lets you create site maps just like the ones in Fusion's site view for your web site. Cool!



The greatest news is that using SiteMap 5.0 is easy and fast.

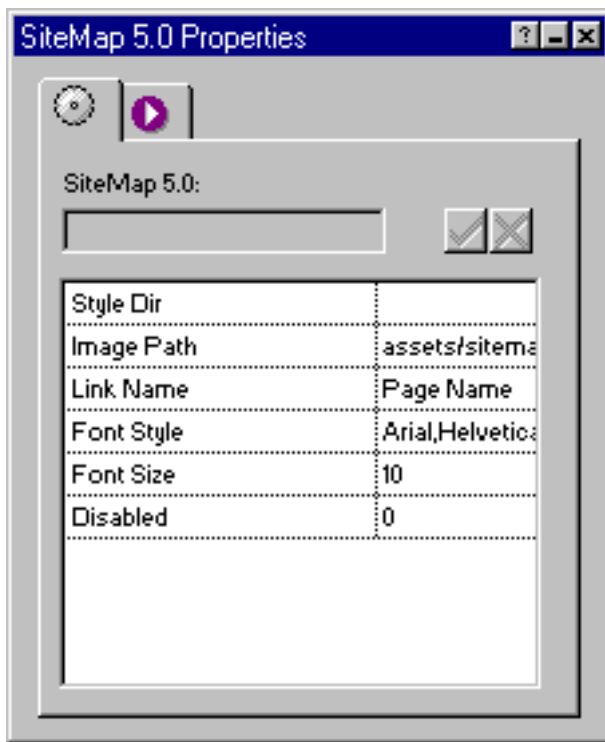
The component draws it's information from Fusion's Site view - make a change there, publish your site, and your SiteMap will update.

SiteMap also allows you to exclude pages too.!

Getting Started:

- Run the Installation program, specifying the location of Fusion 4.0/5.0's component directory
- Launch Fusion
- If the coolmaps.com component toolbar is not visible choose View > Toolbars > Component Tools > coolmaps.com components
- Select the SiteMap component and drag out the area where you would like the SiteMap to be built.

The SiteMap properties now appears in Fusion's properties palette.



SiteMap Options

SiteMap draws its structure from [Fusion's site tree](#). While SiteMap can be told to ignore pages in the tree, for best results your site tree must be logically laid out!

Options

Style Directory

SiteMap needs to know the location of the SiteMap graphics - allowing you to make your own graphics and choose them if you want. In order to select a directory, you must select one file (any file will do) in that directory. During installation, the images are loaded into the:

XX: \NOF\components\coolmaps\images\directory

Image Path

You can control where the images will be published on your server. If there are no site-specific directory needs, the default will work fine. If you need to change it, simply type in the new path. The default Path is:
assets/sitemapperimages

Link Name

To identify your pages in the site map, you can use the standard page name or one of the custom names you set (banner, title, or button).

Font Style

The default font style is Arial,Helvetica,Univers,Zurich BT. To edit the style enter the font names separated by commas in the Palette field.

Font Size

10 is the default setting. It is recommended you do not use larger sizes.

Disabled

You can exclude pages from the SiteMap using the Disabled function. Enter the number of pages you'd like to exclude then specify each page.