



# SiteSearch 4.0

copyright © 1999 coolmaps.com inc

## Getting Started

**Sorry. SiteSearch no longer available for sale.**

SiteSearch allows you to place a keyword site search on to your page. The search is 100% client-side meaning that it is very fast and there is no CGI setup required.

To get started with SiteSearch:

- Run the SiteSearch Installation program, specifying the location of Fusion 4.0's component directory.
- Launch Fusion

The SiteSearch component consist of three seperate components.

- 1) **LinkForm**: this "page-view" component is used to create the form on which the user enters his/her keywords. The LinkForm component can be found on the "coolmaps.com extras" toolbar.
- 2) **SiteSearch**: this is another "page-view" component. It is placed onto the web page where the results of the search are to be displayed. This component defines the area where the results are to be shown, and formats the output.
- 3) **Search & Tag**: this is a "publish" component. It requires no configuration. Checking a check-box in the Publish view set-up page activates this component. This component "goes through" the entire site to extract keywords in order to create one big index of the entire site. After the index is completed, it is inserted into the results page.

All three of these components (and how to make your site search-able) are explained on the following pages.

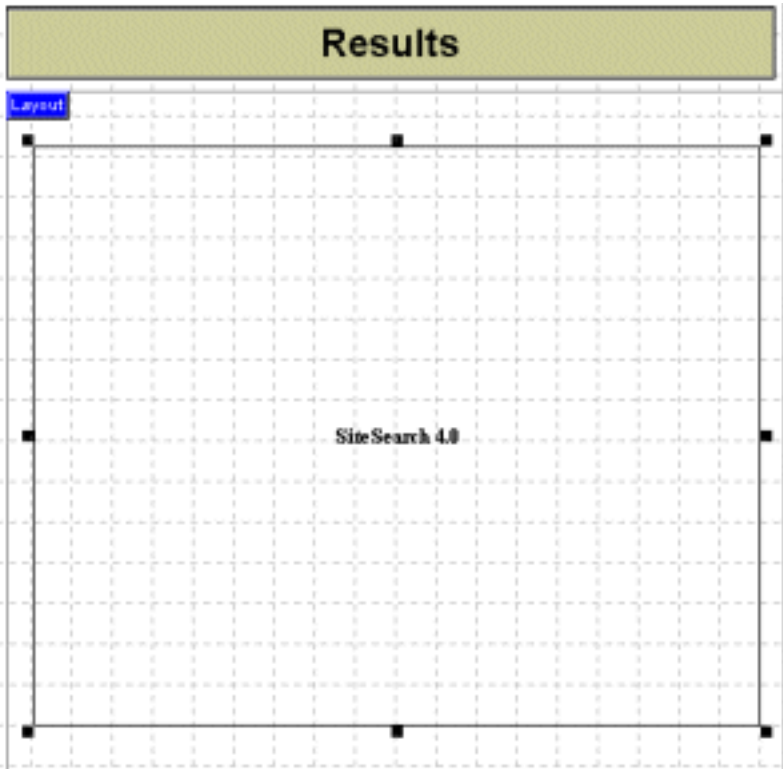
## SiteSearch Options

How to set up a SiteSearch Results page

- Choose View > Toolbars > Component Toolbars > coolmaps.com components.

(Notice that there is a second coolmaps components toolbar called 'extras' - we will use that in step 3)

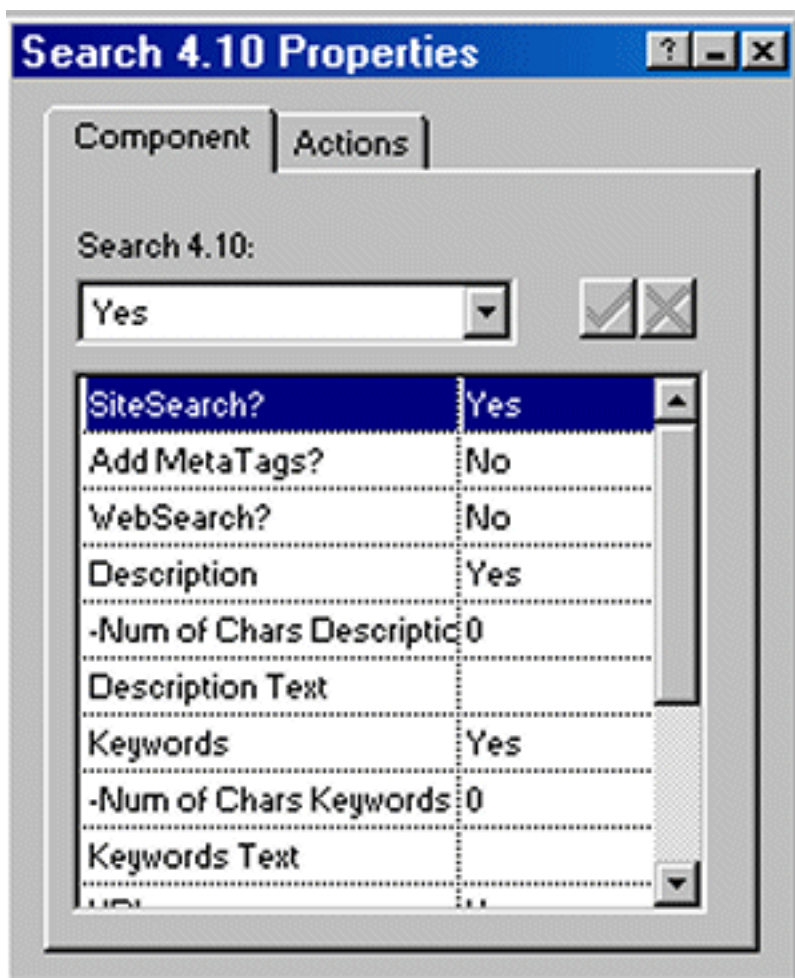
Select the Search component and drag out the area on the page that you wish the results to occupy.



The width of the component will determine the width of the results and where the search will wrap its contents. The component height does not really matter because the actual height will depend upon the number of matches for the query.

Make sure there is plenty of room below the component for a long list of results.

Configure the palette -



The following options are available in the component properties table:

- Description (Yes/No) - determines whether or not the search results will be displayed with a description field. The description will be the value of the Meta Description tag, or if there is no Meta Description tag it will be the first 40 text characters in the file.
- Num of Chars in description - specify how many characters will be shown for the description results.
- Description Text - specify header text for the results page.
- Keywords (Yes/No)- specify whether or not you want all the search keywords to be shown on the results page.
- Keywords Description - specify the header text for the keywords.
- Num of Chars Keywords - specify how many characters will be shown for the keyword results.
- URL (Yes/No) - the listing of a page will always provide the user with a link to the actual page. This option allows you to display the link url to the end user.
- Link URL - (only available when the URL option is set to yes) this allows you to specify whether or not displayed result URLs will be hyperlinked.
- Found Text Style (No/Bold/Italic/Strong/Emphasis)- set

the appearance of the keyword as it is found in the title, description, and/or keywords.

- Found Text Color - enter a hexadecimal number to set the color of the keyword as it is found in the title, description, and/or keywords.
- Not Found - specify the page which is shown when the search yields no results.

Tips from component jedi Peter Sklar:

Can the SiteSearch be told to ignore certain pages?  
Click on object HTML for the area you would like ignored and add #site search ignore#. You could also put #site search ignore# inside a comment tag.

Does SiteSearch display Meta Description information in results?

Yes! If you place inside the Head HTML with the Meta Description tag, this description will show up on the search results page.

## SiteSearch Options

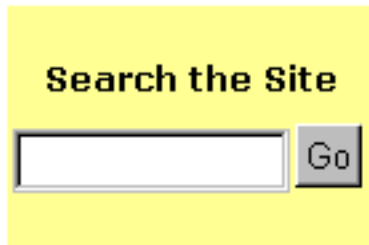
You can put a search form on any page or in the masterborder.

To set up a SiteSearch Search page

- Choose View > Toolbars > Component Toolbars > coolmaps.com extras.

A small toolbar appears containing coolmaps LinkForm button. LinkForm saves you time by allowing you to browse to the page that will be 'action' page for the form, rather than having to insert it manually in Form properties.

The Form consists of an input field and a submit button. You should use the included LinkForm component to help you create your button.



The image shows a search form on a yellow background. At the top, the text "Search the Site" is displayed in bold black font. Below this text is a white rectangular input field with a thin black border. To the right of the input field is a grey rectangular button with the word "Go" written in white text.

Here are the steps to adding the search form:

1. Place a Layout Region on the page
2. Check the "Layout Region is a Form" button
3. Set the Form settings Method to GET (instead of POST)
4. Add a Forms edit field - name it "keys" (without the double quotes)

5. Drop the LinkForm component/button on to the page
6. Select the proper results page
7. Change the button text as desired

#### Enabling the Publish Component

1. In the Publish view choose Set-up > Components.
2. Check the box that says "coolmaps.com Search & Tag".
3. Publish as usual.
4. Voila! Client site search in Fusion :-)