

SlideShow 5.0

Getting Started with SlideShow

SlideShow is a NetObjects Fusion 4.0/5.0 component which lets you add a graphic to your page which will change images when another button on the page is clicked.

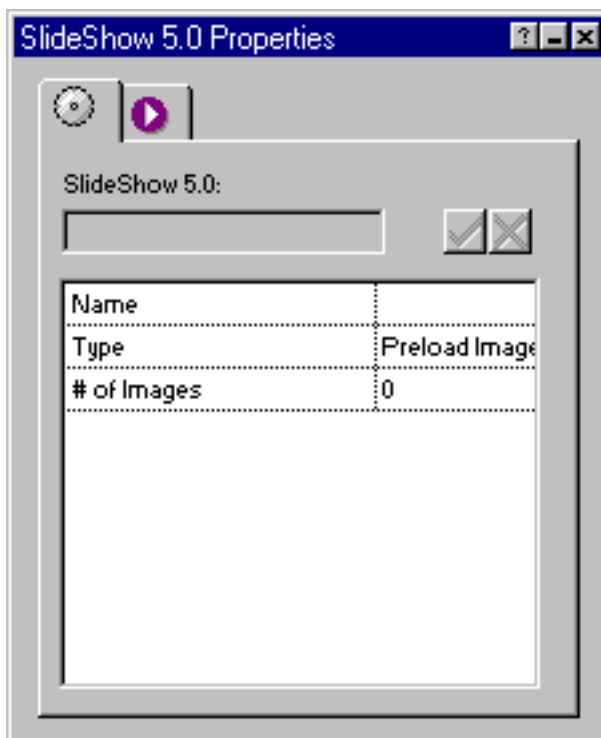
SlideShow cleans up your pages and makes them look cooler because you can now present a series of images on a single location.

Users will enjoy the continuity of seeing all the images available by clicking the forward and back buttons that you provide.

Getting started with the SlideShow:

- Run the Installation program, specifying the location of Fusion 4.0/5.0's component directory.
- Launch Fusion
- If the coolmaps.com component toolbar is not visible choose View > Toolbars > Component Tools > coolmaps.com components
- Select the SlideShow component and drag out an area on the page (this graphic does not appear on the published page).

The SlideShow properties now appears in Fusion's properties palette.



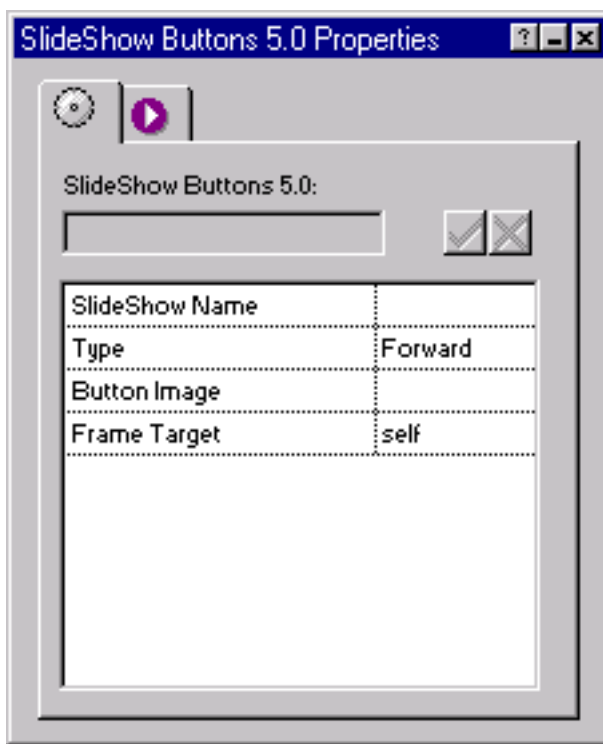
SlideShow Options

First, Load The SlideShow Images

1. In palette, click "Name" and type a case-sensitive name into the input field - don't use spaces or funny characters. Remember this name you will use it again.
2. In palette, click "Type", use pull-down to choose "Load On Click" or "Preload Images" (pre-load will require that all images are loaded before the component works).
3. Click "# of Images" and type the number of images you want to use in the input field. Click check box to right of input field.
4. Double click image #1 and search through directories for the image file you want to be in the first position.
5. Double click the file with first image (open file) and it will come up in the slide show region.
6. Repeat to load each image one by one to the SlideShow.

Second, Add The Button Controls:

1. Select the NetObjects Fusion View pull-down menu, select Toolbars > Components Tools > coolmaps.com extras. An additional toolbar components box opens.
2. Select the SlideShow icon that appears in this new toolbar (it is identical to the SlideShow icon in the other toolbar) and draw a box on the page. The SlideShow Buttons Properties palette appears.



3. Click SlideShow Name and type the same name you used in the SlideShow Properties palette (case-sensitive).
4. Click "Type" and the pull-down menu of the input field will give you three choices.

5. **Choose Forward:** This button allows you to move the slide show forward one image at a time. Double click "Button Image" and search files for forward button image. We've placed a few arrows for you to use in the components/coolmaps/images directory. You may also use your own.
6. Either click on SlideShow icon in Coolmaps.com Ext and draw new box or hold control button on keyboard down, then click and drag (Make Copy) the icon you just created. Leave the new box selected. Double click on "Type" in SlideShow Buttons Properties box to list Backward.
7. **Backward:** This button allows you to move the SlideShow backward one image at a time. Double click "Button Image" and search files for backward button image.
8. Repeat step #6.
9. **Jump To Slide:** Double click and Slide # category is inserted beneath type. Type current Slide Show name in "SlideShow Name" category.
10. In the input field, type number of images you are using, then click on the checkmark.
11. Click Slide # and type the number 1, double click Button Image and open the image (preferably an image that has a number 1 in it) you wish to use to represent what the user will click on to jump to slide #1.
12. Repeat Step 11 for any other images you would like the user to be able to jump directly to.
13. Finally, if your site implements frames and the slide show is in a separate frame from the buttons, select the frame where the slide show resides as the Frame Target. If your site does not implement frames or the slide show buttons are in the same frame as the slide show, leave Frame Target as "self."