



StarSearch5.0

Getting Started with StarSearch

StarSearch creates a keyword search of your entire site along with, optionally, specified external web pages. The search is 100% client-side, meaning that it is very fast and there is no CGI setup required.

The StarSearch component consists of three separate components:

- 1) **LinkForm:** this Page View component is used to create the form on which the user enters his/her keywords. The LinkForm component can be found on the "coolmaps.com extras" toolbar.
- 2) **StarSearch:** this is another Page View component. It is placed on the web page where the results of the search are to be displayed. This component defines the area where the results are to be shown, and formats the output.
- 3) **Search & Tag:** this is a Publish component. It requires no configuration. Search & Tag is activated by selecting it in the Publish Setup dialog. This component reads the specified web pages and extracts keywords which are used to build a searchable index.

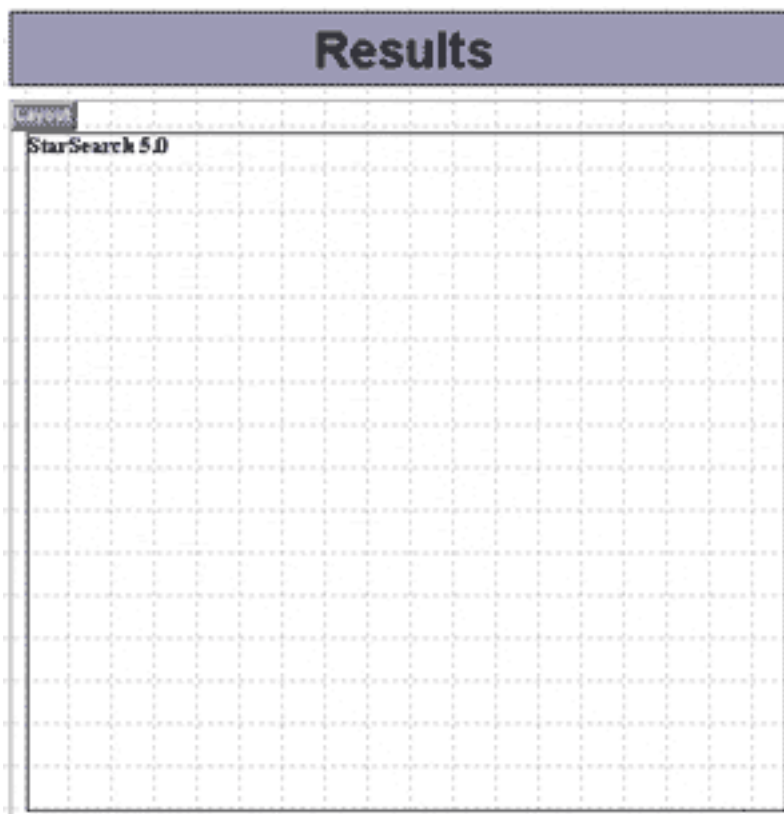
All three of these components are explained on the following pages.

StarSearch Options

How to set up a StarSearch Results page

- Choose View > Toolbars > Component Toolbars > coolmaps.com advanced

Select the StarSearch component and drag out an area on the page that you wish the results to occupy.

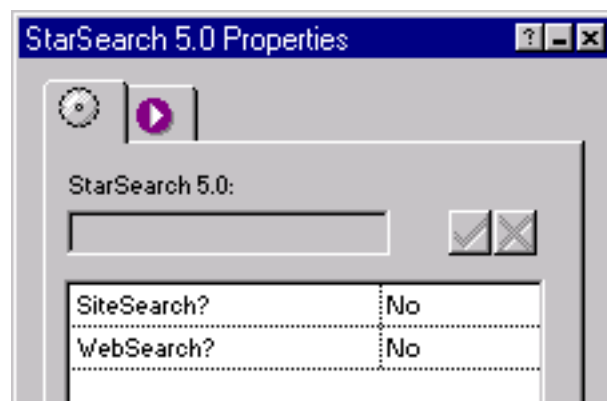


The width of the component will determine the width of the results and where the search will wrap its contents. The component height is of little consequence, as the actual height will depend upon the number of matches for the query.

Make sure there is plenty of room below the component for a long list of results!

Configure the StarSearch Palette

Initially, the StarSearch property palette will have two options:



SiteSearch? - Yes/No

Set this option to "Yes" if you'd like the current Fusion site to be included in the search. Set to "Yes", StarSearch will automatically sift through your published site and add it to the searchable index.

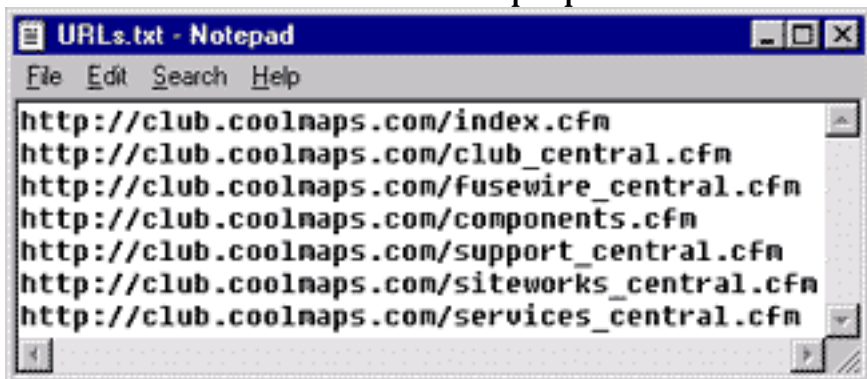
WebSearch? - Yes/No

Set this option to "Yes" if you'd like to include in your search, external pages that have already been published on the internet. Note: This option will require that you be connected to the internet at the time of publish.

- WebSearch Type File/Palette

Select whether you'd like to specify the external web pages via a text file or

palette. If you select File, an additional field, File Name, will appear--use this field to select the text file. The proper format for the text file is as follows:

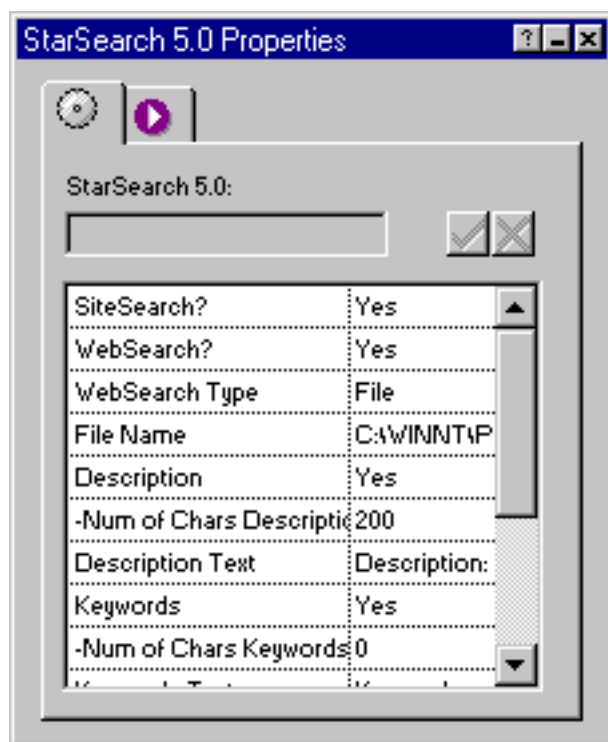


```

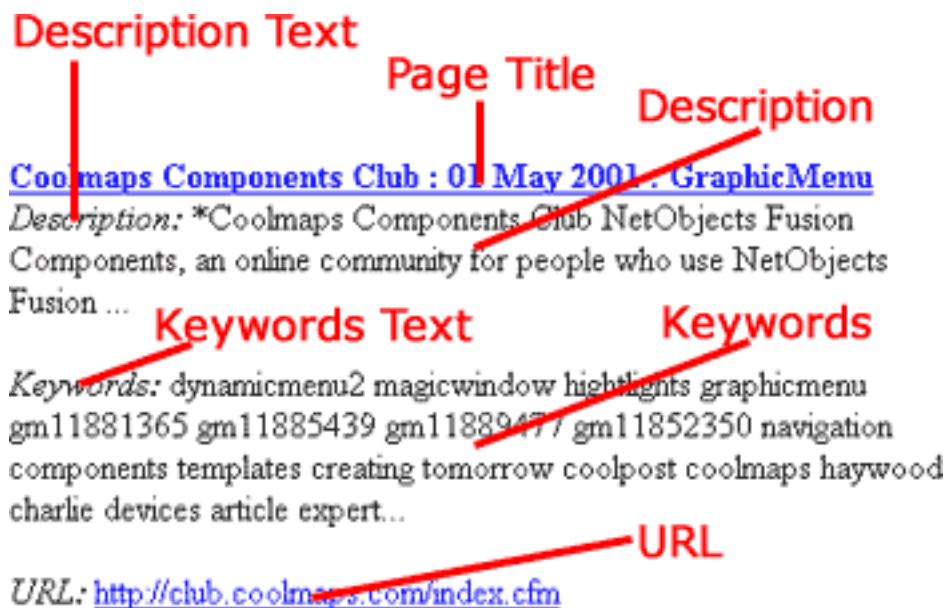
URLs.txt - Notepad
File Edit Search Help
http://club.coolnaps.com/index.cfm
http://club.coolnaps.com/club_central.cfm
http://club.coolnaps.com/fusewire_central.cfm
http://club.coolnaps.com/components.cfm
http://club.coolnaps.com/support_central.cfm
http://club.coolnaps.com/siteworks_central.cfm
http://club.coolnaps.com/services_central.cfm
  
```

If you select to use the Palette option, specify the number of external pages that'll be included in the search using the External Links field and enter the URLs into the palette. For both the File and Palette options, be sure to specify page names EXACTLY (i.e. "http://yourdomain.com/index.html" instead of "http://yourdomain.com").

The remaining options determine how the search results will be returned.



Example Search Result



Description - Yes/No

Determines whether or not the search results will be displayed with a description field. The description will be the value of the Meta Description tag, or if there is no Meta Description tag it will be the first 300 text characters of the page.

Num of Chars Description

Specify how many characters will be shown for the description results.

Description Text

Specify description heading text.

Keywords - Yes/No

Specify whether or not you want the page keywords to be returned with the results.

Keywords Description

Specify keywords heading text.

Num of Chars Keywords

Specify how many characters will be shown for the keyword results.

URL - Yes/No

Every query match will provide the user with a link to the actual page. Optionally, this feature allows you to display the URL as well to the user.

Link URL

(only available when the URL option is set to "Yes") Specify whether or not you'd like the result URL to be hyperlinked.

Found Text Style None/Bold/Italic/Strong/Emphasis

Set the appearance of the keyword as it is found in the title, description, and/or keywords.

Found Text Color

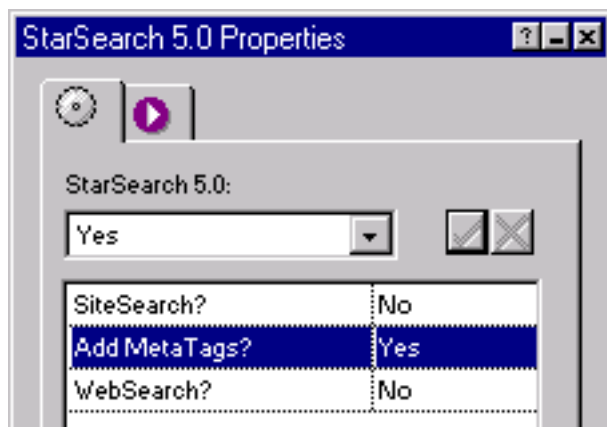
Use Fusion's color picker to set color of the keyword as it is found in the title, description, and/or keywords.

Not Found

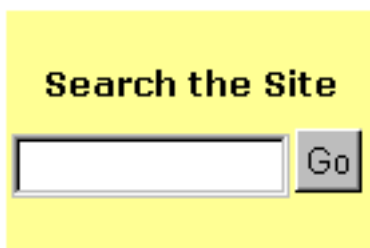
Specify the page that the user will be redirected to if the search returns no results.

Attention MetaTagger users!

When using MetaTagger and StarSearch on the same site, MetaTagger will be controlled through StarSearch's palette using the Add MetaTags? option.



The next step is to place a search form on your site. The search form can be on any page or in the masterborder.



The form should consist of an input field and a submit button. Use the included LinkForm component to help you create your button. To access the LinkForm component:

- Select View > Toolbars > Component Tools > coolmaps.com extras

 A small toolbar appears containing coolmaps LinkForm component.

Follow these steps to create a search form:

1. Place a Layout Region on the page
2. Select the "Form" option in the property palette (in NOF4: "Layout Region is a Form")
3. Click on the "Settings..." button and set the Form Method to GET (instead of POST)
4. Add a Forms Edit Field and set its name in the palette to "keys" (without the double quotes)
5. Drop the LinkForm component on to the page
6. In the LinkForm palette, select the results page (the page containing the StarSearch component)
7. Change the button text as desired

Enabling the Publish Component

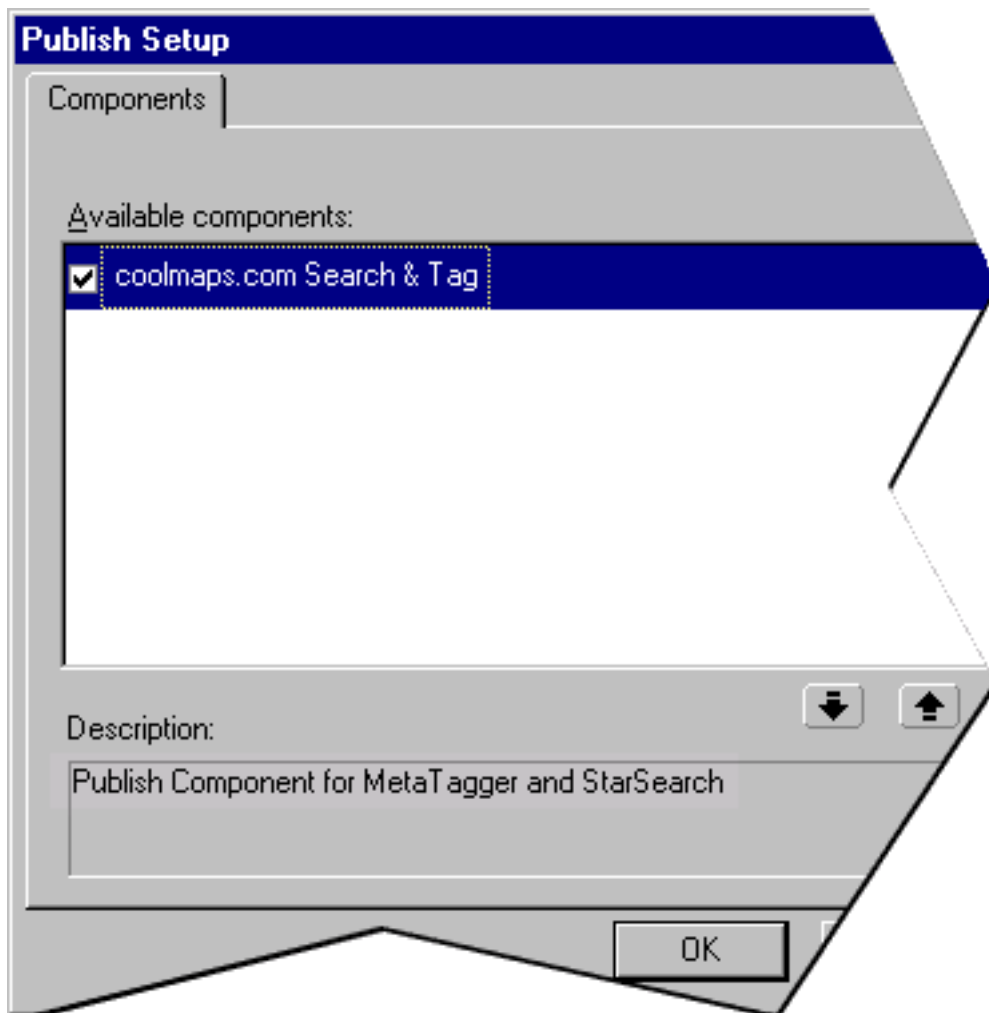
The last step is to enable the Publish component.

in Fusion 4:

- Choose Publish View > Publish Setup > Components
- Check 'coolmaps.com Search & Tag'

in Fusion 5/MX:

- Choose Publish View > Publish > Publish Components
- Check 'coolmaps.com Search & Tag'



Tips from component jedi Peter Sklar:

Q: Can StarSearch be told to ignore certain pages?

A: Yes! StarSearch will exclude all pages in your site that have the text: #site search ignore#. For best results enclose #site search ignore# in a comment tag:

```
<!--#site search ignore#-->
```

and place it between the head tags of the page.

Q: Does StarSearch display Meta Description information in results?

A: Yes! If you place inside the Head HTML with the Meta Description tag, this description will show up on the search results page.

Be sure to see our [StarSearch Component Spotlight](#) for helpful tips and other info!