




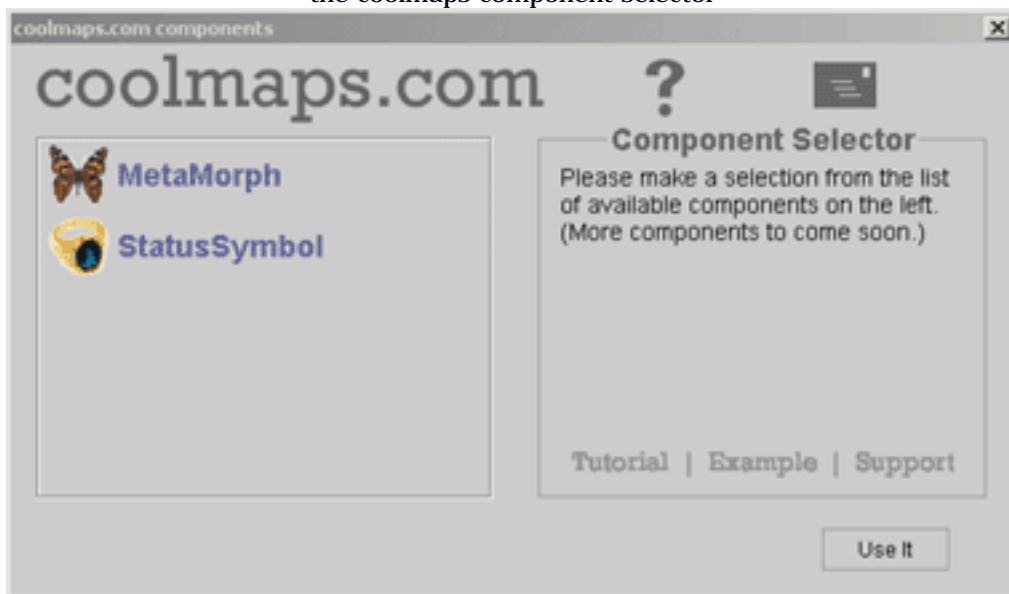
Getting Started with StatusSymbol

Use StatusSymbol to liven up the browser's status bar. Place static text, scrolling text, textual animations, the time, and more into the status bar.

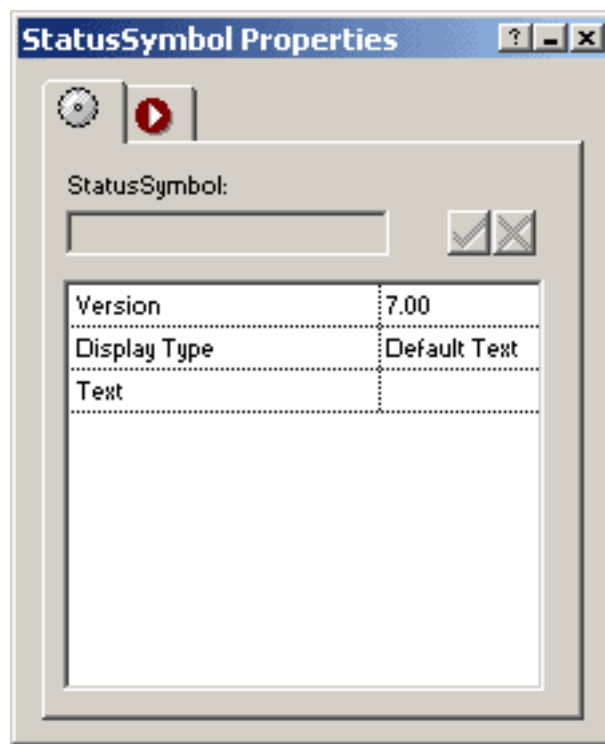
Getting started with StatusSymbol is easy!

- Run the installation program. Check the box next to the version(s) of Fusion that you have installed on your machine (4/5/MX/7).
- Launch Fusion.
- If the coolmaps.com component toolbar is not visible choose View > Toolbars > Component Tools > coolmaps
- Select the coolmaps component selector  and drag it on your page.
- In the coolmaps component selector, select StatusSymbol and click the "Use It" button.

the coolmaps component selector



The StatusSymbol Properties now appear in Fusion's properties palette.



StatusSymbol Options

Version

Property field displays the version number of the component. This is non-changeable.

Display Type

Select from the following options:

Default Text

Specified text will be displayed in the browser's status bar at all times except when browser events--such as hovering over a link--causes the status bar to display other information.

- Text
Text message to be displayed in the browser's status bar.

Static Text

Specified text is displayed in the browser's status bar at all times, even when browser events--such as hovering over a link--would normally cause the status bar to display other information.

- Text
Text message to be displayed in the browser's status bar.

Scroll Text

Specified messages are scrolled across the status bar, from right to left. Supports user defined number of messages to display, in sequence, in the status bar.

- Palette/File?
Specify how the scrolling messages will be specified. Select "Palette" to specify the messages through the palette, or select "File" to specify the messages using a text file (individual messages are separated by line breaks). If "Palette" is selected, specify the # of Messages desired and fill in the Message #n property fields provided. If "File" is selected, use Fusion's Open dialog to locate and select a text file.

Animation

Displays a series of text strings, in sequence, in the status bar. This property can be used to create textual animations.

- Palette/File?
Specify how the animation "frames" will be specified. Select "Palette" to specify the frames through the palette, or select "File" to specify the frames using a text file (individual frames are separated by line breaks). If "Palette" is selected, specify the # of Frames desired and fill in the Frame #n property fields provided. If "File" is selected, use Fusion's Open dialog to locate and select a text file.

Current Local Time

Displays the browser's current local time and date in the status bar.

- No special options.

Time On Page

Displays in the status bar the length of time spent on the current page. Can be customized with desired prefix text.

- Prefix Text
Text to be displayed in front of the timer. Example:
Time On Page: 00:12

It is necessary to realize how StatusSymbol works: For all settings besides Default Text, the way the component works is by constantly updating the browser's status bar with the desired text. In effect, what this does is even when browser events display information in the status bar (such as link URL information), StatusSymbol immediately writes over it with its own text. This is where the Refresh property comes in. Refresh allows you to set how quickly the status bar is updated by StatusSymbol. The lower the number, the quicker to update; the higher the number, the slower to update. The pros and cons of this are these: The lower the number, the less likely you'll see interference in the status bar from other browser events, but at the same time it may cause the browser's status bar's text to flicker some. The higher the number, the less likely the browser's status bar will flicker, but at the same time it's more likely that other browser events will cause interference and disrupt the desired text in the status bar.