



# StickUp 5.0

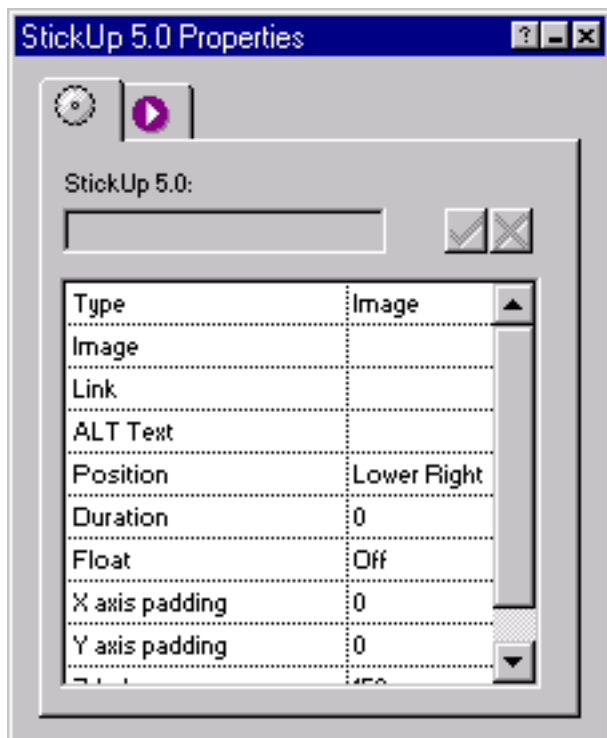
## Getting Started with StickUp

StickUp adds a 'floating' image or layout region to any page. See the [examples](#).

Getting started with StickUp 5.0 is easy!

- Run the Installation program, specifying the location of Fusion v4.0/5.0/MX's component directory.
- Launch Fusion v4.0/5.0/MX.
- If the coolmaps.com component toolbar is not visible choose View > Toolbars > Component Tools > coolmaps basic
- Select the StickUp component and drag out an area on the page

The StickUp Properties now appear in Fusion's Properties palette.



Note: It is inconsequential where StickUp is placed in the NOF page layout. The actual location of the published object is controlled through the properties palette.

## StickUp Options

StickUp can either float a single image or an entire layout region. Below are the options for both types.

## Type : Image

### Image

Specify the image to use.

### Link

If desired, select a URL for the image to link to.

### ALT Text

Enter desired ALT text.

### Position

StickUp can place the image in any of the four corners of a web page. Specify here which corner you wish to use.

### Duration

In seconds, the length of time the image will be visible. A value of '0' indicates the image will display indefinitely.

### Float (Off | On)

When set to 'No' the image will jump when the page is scrolled ([example](#)). When set to 'Yes' the image will float when the page is scrolled ([example](#)).

### Float Speed

This option determines how fast the image will 'float.' It is only available when the 'Float' option is set to 'Yes.' The default speed is 15. To speed the floating, enter a slightly higher number; to slow the floating, enter a lower number.

### X axis padding

In pixels, the space between the edge of the browser and the graphic. This option controls padding on the left or right side of the image.

### Y axis padding

Same as 'X axis padding' but affects padding on the top or bottom of the graphic.

### Z-Index

Affects the layer order of StickUp in the browser. Change if so desired or if necessary, otherwise it can be left to the default of 150.

## Type : Layout Region

To float an entire layout region, you must do the following:

1. Draw a layout region on the page using Fusion's layout region tool.
2. In the properties palette of the the layout region, set HTML Output to "Fixed Page Layout" in Fusion 5 or "CSSP+Layers" in Fusion 4.
3. Click on the Actions tab of the properties palette (it's the third tab). In the Object ID field, enter "stickup".
4. Place just about anything within the layout region (i.e. text, images, components, etc).
5. Configure StickUp:

### Duration

In seconds, the length of time the layout region will be visible. A value of

'0' indicates the layout region will display indefinitely.

#### Float (Off | On)

When set to 'No' the layout region will jump when the page is scrolled ([example](#)). When set to 'Yes' the layout region will float when the page is scrolled ([example](#)).

#### Float Speed

This option determines how fast the layout region will 'float.' The option is only available when the 'Float' option is set to 'Yes.' The default speed is 15. To speed the floating, enter a slightly higher number; to slow the floating, enter a lower number.

#### X Coordinate

The x coordinate of the upper left hand corner of the layout region.

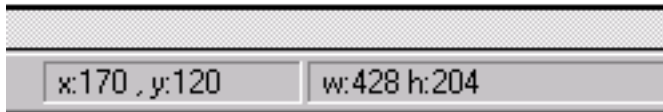
#### Y Coordinate

The y coordinate of the upper left hand corner of the layout region.

#### Z-Index

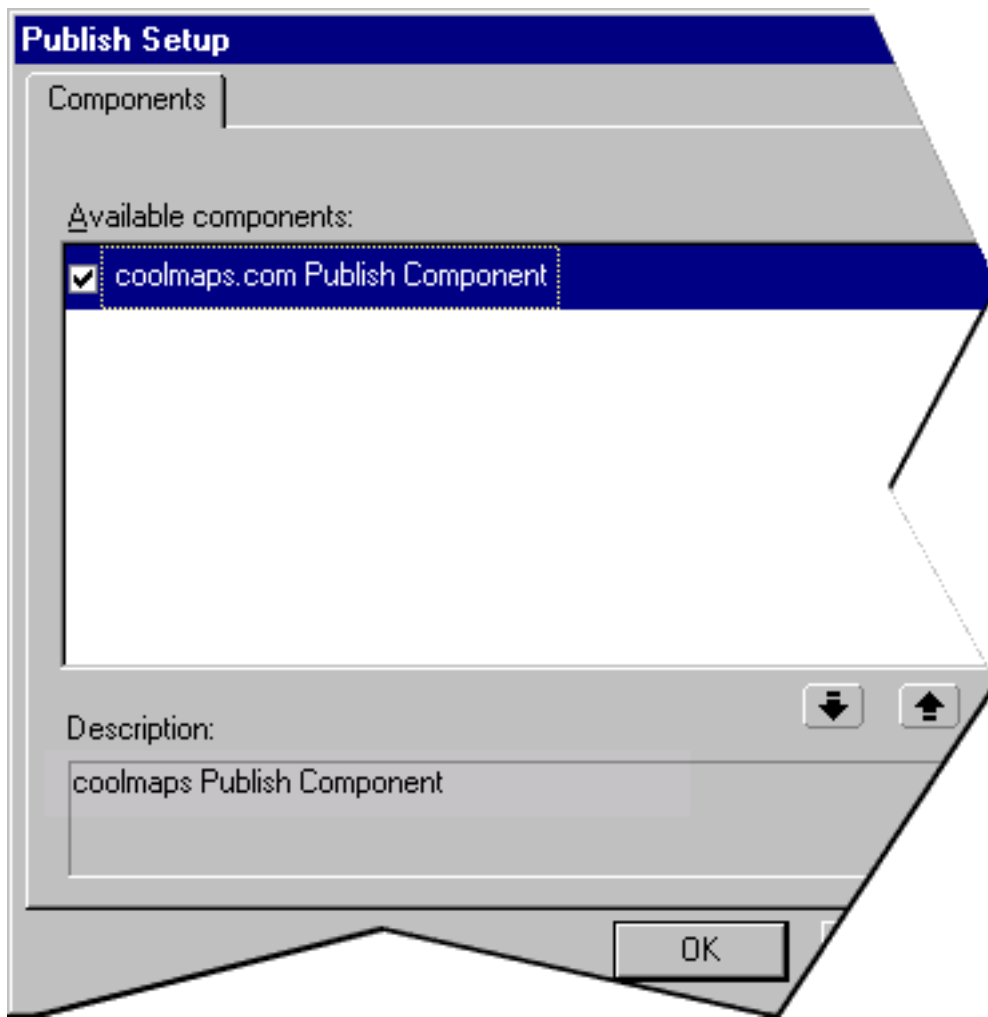
Affects the layer order of StickUp in the browser. Change if so desired or if necessary, otherwise it can be left to the default of 150.

**Tip:** The x and y coordinates of the layout region are displayed in the status bar when it is selected. Example:



Once the palette options are configured, the coolmaps.com Publish Component must be enabled.

- Choose Publish View > Publish > Publish Components
- Check 'coolmaps.com Publish Component'



Don't see the coolmaps.com Publish Component listed? Get it [here!](#)