

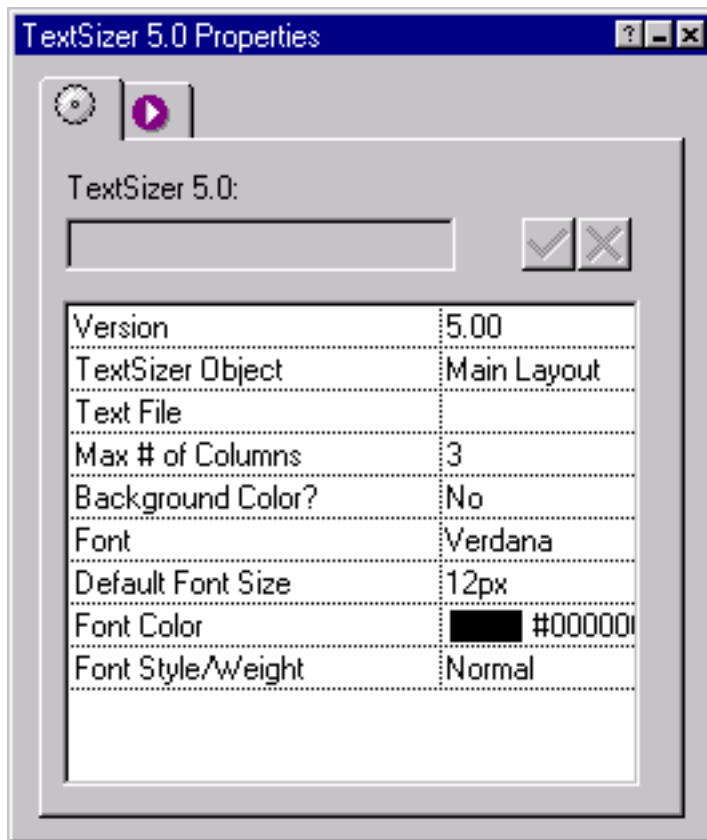
ABC TextSizer 5.0

Getting Started with TextSizer

Getting started with TextSizer is easy!

- Run the installation program. Check the box next to the version(s) of Fusion that you have installed on your machine (4/5/MX/7).
- Launch Fusion.
- If the coolmaps.com component toolbar is not visible choose View > Toolbars > Component Tools > coolmaps basic
- Select the TextSizer component and drag it on your page.

The TextSizer Properties now appear in Fusion's properties palette.



To understand how TextSizer is implemented, it is first necessary to understand that TextSizer consists of many parts that combine to form the finished product. Have a look at the [example](#). The example has 8 parts: the main text area, a previous page button, a next page button, an increase font button, a decrease font button, a single column button, a multi-column button, and the page number display (lower right

corner).

Each of these parts are separate entities and are placed and positioned in the page layout individually. And it is not necessary for all of the parts to be used. For example, TextSizer works fine with only the main text area, a forward button and a backward button. So it is at your discretion what parts to implement.

For each of the parts you do want implemented, you'll need to drop an instance of TextSizer in the Page Layout. In the TextSizer property palette there is a field, TextSizer Object, that determines which of the before mentioned 8 parts, that instance of the component will be.

TextSizer Options

The following is a listing and description of the TextSizer palette options.

Version

This will help you identify if you are using the most recent version. It is only a memo and is not changeable. If you have any support questions please supply this version number.

TextSizer Objects

Main Layout - The central part of the component where the text is displayed.

- Text File - Select a text file which contains the contents that will be displayed within the main layout. The text file must be pretty much that--just text. The only HTML tag that is necessary within the text file is the <P> tag for the separation of paragraphs. Other HTML tags may interfere with TextSizer's functionality (though there are some that won't). Use of additional HTML is at your own risk.
- Max # of Columns - Enter the maximum number of columns in which TextSizer will display the text. Note that TextSizer will automatically reduce the number of columns if individual column width is tenuous, thus increasing readability.
- Background Color? - If a custom background color is desired for the main layout, set to "Yes" and select the color using the Background Color property field, located directly below in palette.
- Font - Select the desired font for the text in the main layout. If a font other than what is listed is desired, select "Custom Font" and enter it into the "Custom Font" property field, located directly below in palette.
- Default Font Size - Select the font size for the text in the main layout.
- Font Color - Select the font color for the text in the main layout.
- Font Style/Weight - Select the font style/weight for the text in the main layout.

The Following TextSizer Objects all share the same properties (listed below).

Increase Font Button - Button for increasing the font size of the text in the main layout.

Decrease Font Button - Button for decreasing the font size of the text in the main layout.

Next Page Button - Button for advancing to the next page (when in "multi-column"

mode).

Previous Page Button - Button for returning to the previous page (when in "multi-column" mode).

Single Column Button - Button for displaying full length of text in one column, on one page.

Multi Column Button - Button for displaying text in multiple columns (when applicable), across multiple pages.

Common Properties:

- **Text/Image** - Select whether the button will be text or image.
 - **Text**
 - **Button Text** - Enter the text that will be used for the button.
 - **Font** - Select the desired font for the text in the main layout. If a font other than what is listed is desired, select "Custom Font" and enter it into the "Custom Font" property field, located directly below in palette. //-Custom Font
 - **Font Size** - Select the font size for the text in the main layout.
 - **Font Color** - Select the font color for the text in the main layout.
 - **Font Style/Weight** - Select the font style/weight for the text in the main layout.
 - **Image**
 - **Button Image** - Select the image to be used for the button.
 - **ALT Text** - Optionally, specify ALT text for the image.

Page Number Display - Displays the current page and the total number of pages (ex. "Page 1 of 7", "Page 2 of 7", etc.)

- **Output Format** - Enter the format for the page number display, using any expression that befits you. The only requirement is that you include two variables within the expression that will represent the current page and the total number of pages. Those variables are "<p>" and "<t>", respectively. So, for example, if you want the output to have the format "Page 1 of 7", you'd use the expression "Page <p> of <t>".
- **Font** - Select the font for the text in the main layout. If a font other than what is listed is desired, select "Custom Font" and enter it into the "Custom Font" property field, located directly below in palette. //-Custom Font
- **Font Size** - Select the font size for the text in the main layout.
- **Font Color** - Select the font color for the text in the main layout.
- **Font Style/Weight** - Select the font style/weight for the text in the main layout.