



TextTree 5.0


Getting Started with TextTree 4.0

TextTree 5.0 (compatible with Fusion v4.*) allows you to rapidly develop flexible, site based navigation.

 [Home](#)

Navigation generated by the TextTree is primarily text based (e.g. beside). You can choose to use icons to represent 'levels'.

 [Products](#)

 [Vegetite](#)

A full range of text formatting options are also available.

 [Marmite](#)

 [Promite](#)

TextTree is the first component that integrates with the FauxGraphic.

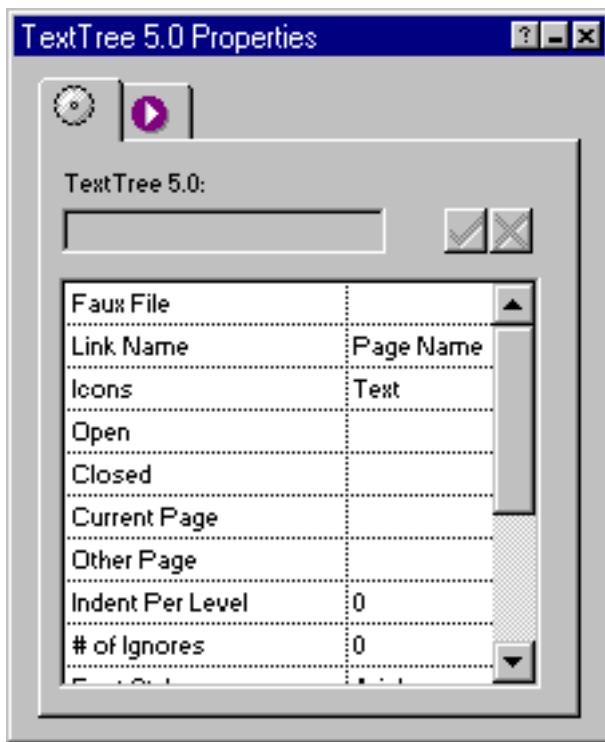
 [Staff](#)

 [Interests](#)

Getting Started:

- Run the Installation program, specifying the location of Fusion 4.0/5.0's component directory
- Launch Fusion
- If the coolmaps.com component toolbar is not visible choose View > Toolbars > Component Tools > coolmaps.com components
- Select the TextTree component and drag out an area in the MasterBorder.

The TextTree properties now appears in Fusion's properties palette.



TextTree Options

TextTree draws its structure from Fusion's site tree. While TextTree can be told to ignore pages in the tree, for best results your site tree must be logically laid out.

Options

Faux File

TextTree can call on FauxGraphic styles allowing you to further customize the appearance of your text tree. FauxGraphic is available from coolmaps. Step 3 of this tutorial covers FauxGraphic integration.

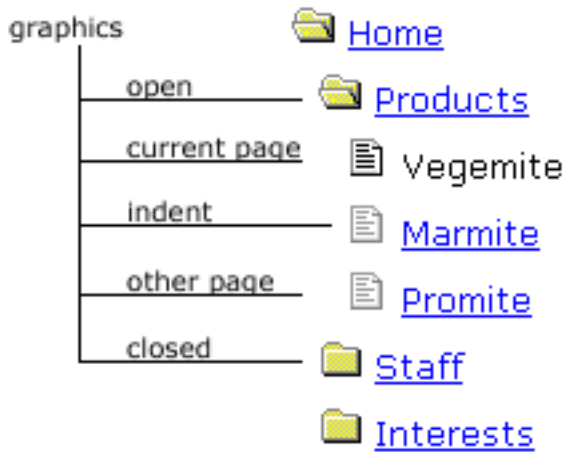
NB. You do not need FauxGraphic for the TextTree to function.

Link Name

The name displayed for each page can be drawn from Fusion's Custom Names including Page, Button, Banner and Title.

Icons - Text/Graphic

Select between Text or Graphic icons. Refer to the graphic below. You can define text or graphics for open, closed, current and other. The graphic icons below ship with the TextTree.



Indent

Indent can be set to give the TextTree a nested hierarchical appearance.

of Ignores

Ignores allow you to instruct the TextTree to leave defined pages out of the navigation structure. Enter the number of pages you would like to ignore, double click in the option field and Fusion's link picker will launch allowing you to select pages to be ignored.

Font Style

Select a font face for the links

Font Color

Select a color for the text

Italics - yes/no

Default setting is no. Toggle to suit.

Font Size

Select a font size from 8-36. Keep in mind you will need to allow for the extra room required by larger sizes by dragging the TextTree place holder graphic out wider.

Bold - yes/no

Default setting is no. Toggle to suit.

Target

Default setting is self. Select the required target, typically used on a framed site.

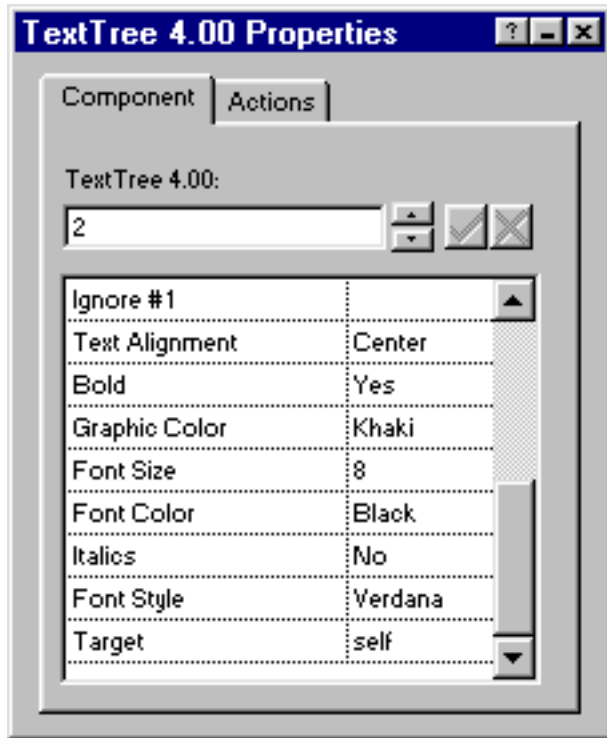
FauxGraphic Integration

The flexibility of the TextTree can be extended by calling on Faux style files that are a part of the FauxGraphic component.

FauxGraphic styles allow you to generate graphical buttons rather than text page names.

Faux Example To call on the Faux Style file browse to the Faux Style dir (default location /components/coolmaps/Faux Styles).

Select a template file. Once this is done the options beneath 'Ignores' will change to FauxGraphic Options.



Please refer to the [FauxGraphic Tutorial](#) if you require assistance with the FauxGraphic options.