



TimeTracker 5.0

Getting Started with TimeTracker

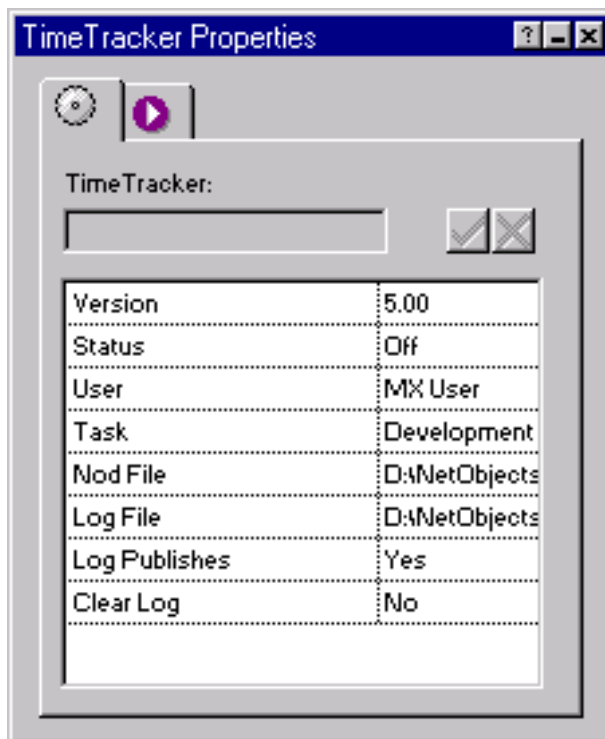
Place the TimeTracker component into your masterborder and every minute you spend designing and editing your website will be entered into a log file. By viewing that log file, you can see how long specific users spent on specific tasks on specific pages.

If TimeTracker is activated (status=on), it will make an entry into your log file every time you ENTER a page or every time that TimeTracker is deactivated (status=off). The entry will log the time spent on the page that you just exited.

Getting started with TimeTracker is easy!

- Run the installation program. Check the box next to the version(s) of Fusion that you have installed on your machine (4/5/MX/7).
- Launch Fusion.
- If the coolmaps.com component toolbar is not visible choose View > Toolbars > Component Tools > coolmaps basic
- Select the TimeTracker component and drag it on your page.

The TimeTracker Properties now appear in Fusion's properties palette.



 **TimeTracker Options****Version**

This will help you identify if you are using the most recent version. It is only a memo and is not changeable. If you have any support questions please supply this version number.

Status - On | Off

Use this to turn TimeTracker on or off. The first time TimeTracker is put on the page it is off. You should turn it off before you leave Fusion to stop TimeTracker. You can easily monitor whether TimeTracker is on or off by looking at the component graphic on your Fusion page. If the watch is red, the timer is off. If it is green, the timer is on.

User

Log entries can be identified by the user. The name entered here will show up in the log file. If there are multiple users then each user should change this when they enter the site.

Task

Log entries can be identified by the task being performed, e.g. text editing, design, etc. The task entered here will show up in the log file. The entry should be changed whenever the user changes tasks. It is good practice to be consistent with the naming of your tasks.

NOD File

By default this is set to a file in your user site's directory. Under normal conditions this will be your current NOD. You can change it here if you so desire. You may want to have one log file for all your work if you work on multiple sites or a particular job may have multiple NODs. The name of the NOD will show up in your log file. Also, TimeTracker will track the last save date of this NOD to report times if you forgot to set your log status to off before leaving the site.

Log File

By default TimeTracker creates a log in the ...\\components\\coolmaps\\logFiles directory. You can select any file you want. For instance, you may want to have one log file for all of your activities. You cannot create a log file from the palette, so if one does not exist you should create a dummy text file in something like Notepad.

Log Publishes - No | Yes

If this option is set to Yes then every time you publish your site an entry will be made in the log file.

Clear Log - No | Yes

This option clears out all entries in your log file and makes a backup.