



WebSearch 5.0

Getting Started

WebSearch allows you to place a keyword site search on to your page that returns results for external sites that you have nominated. For further detail on WebSearch features refer to the [component detail page](#).

WebSearch, SiteSearch and MetaTagger are configured from a shared Properties Palette.

To get started with WebSearch:

- Run the WebSearch Installation program, specifying the location of Fusion 4.0/5.0's component directory.
- Launch Fusion

The WebSearch component consist of three seperate components.

- In Page View: LinkForm,
- In Page View: Search
- In Publish view: coolmaps.com Search & Tag

All three components and how to make external URL's searchable are outlined in the following steps.

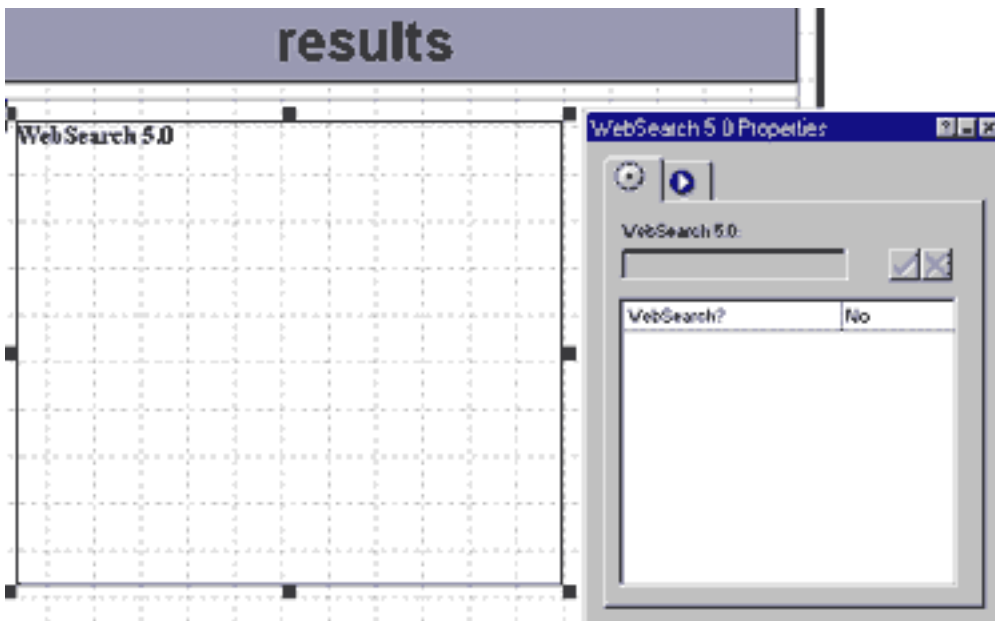
WebSearch Options

How to set up a WebSearch Results page

- Choose View > Toolbars > Component Toolbars > coolmaps.com components.

(Notice that there is a second coolmaps components toolbar called 'extras' - we will use that in step 3)

Select the Search component and drag out the area on the page that you wish the results to occupy.

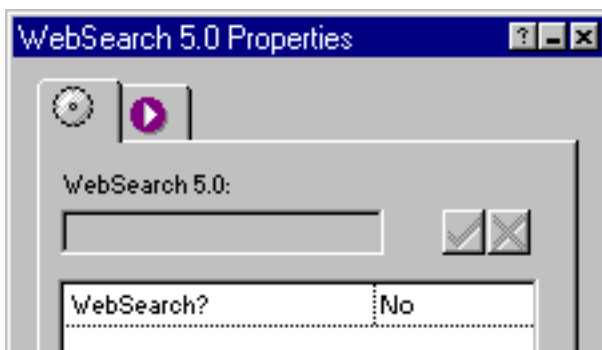


The width of the component will determine the width of the results and where the search will wrap its contents. The component height does not really matter because the actual height will depend upon the number of matches for the query.

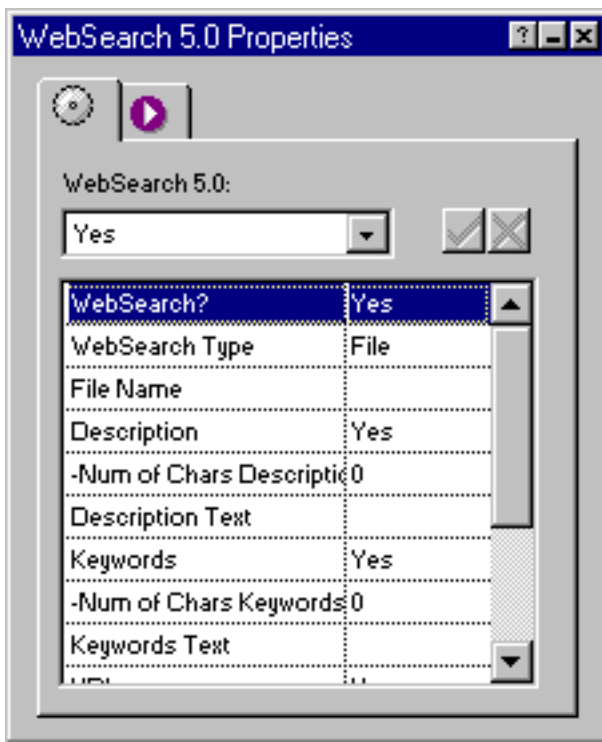
Make sure there is plenty of room below the component for a long list of results.

Configure the palette -

Initially the Properties palette asks you to select which component you would like to configure. If MetaTagger, SiteSearch and WebSearch are installed the palette looks as below:

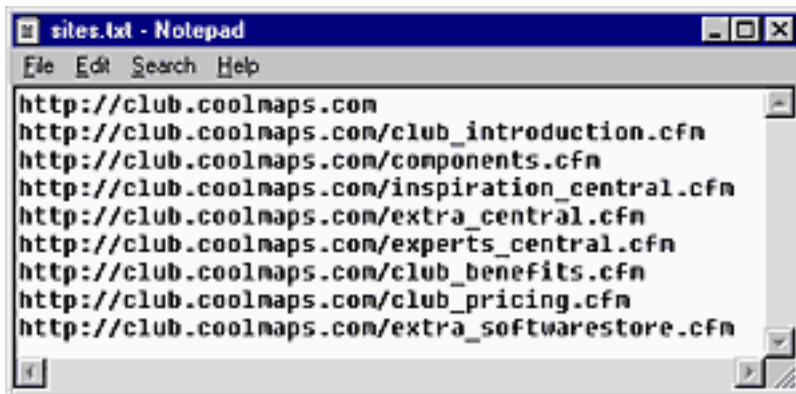


Select the WebSearch option to reveal the WebSearch Properties:



The following options are available in the component properties table:

- WebSearch Type (File/Palette) - you can choose to specify the external links you would like included in your search by either pointing to a text file with each URL on a new line - NO commas, as below, or by entering the URL's directly into the Palette.



- Description (Yes/No) - determines whether or not the search results will be displayed with a description field. The description will be the value of the Meta Description tag, or if there is no Meta Description tag it will be the first 40 text characters in the file.
- Num of Chars Description - specify how many characters will be shown for the description results.
- Description Text - specify header text for the Description.
- Keywords (Yes/No)- This is where you specify whether or not you want all the search keywords to be shown on the results page.
- Keywords Description - specify the header text for the keywords

- Num of Chars Keywords - specify how many characters will be shown for the keyword results.
- Keyword Text - specify header text for the Keywords.
- URL (Yes/No) - The listing of a page will always provide the user with a link to the actual page. This option allows you to display the link url to the end user
- Link URL - (only available when the URL option is set to yes) This allows you to specify whether or not displayed result URLs will be hyperlinked or not.
- Found Text Style (No/Bold/Italic/Strong/Emphasis)- Set the appearance of the keyword as it is found in the title, description, and/or keywords.
- Found Text Color - Enter a hexadecimal number to set the color of the keyword as it is found in the title, description, and/or keywords.
- Not Found - specify the page which is shown when the search yields no results.

WebSearch Form & Publish

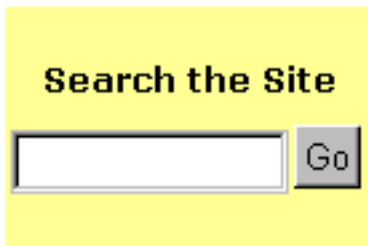
To set up a WebSearch search page

- Choose View > Toolbars > Component Toolbars > coolmaps.com extras.

A small toolbar appears containing coolmaps LinkForm button. LinkForm saves you time by allowing you to browse to the page that will be 'action' page for the form, rather than having to insert it manually in Form properties.

The Form consists of an input field and a submit button. You should use the included LinkForm component to help you create your button.

You can put the search form on any page or in any masterborder.



Here are the steps to adding the search form:

1. Place a Layout Region on the page
2. Check the "Layout Region is a Form" button
3. Set the Form settings Method to GET (instead of POST)
4. Add a Forms edit field - name it "keys" (without the double quotes)
5. Drop the LinkForm component/button on to the page
6. Select the page that will display the results
7. Change the button text as desired

Enabling the Publish Component

1. In the Publish view choose Set-up > Components.
2. Check the box that says "coolmaps.com Site & Tag".
3. Publish as usual.

You must be online when you publish the site as during publish the websearch component goes out to the URL's you have specified, parses them and then inserts this gathered key data into the published Fusion pages that your site visitor will then be able to search. Cool!

Late Breaking Feature: after you publish once, you will be prompted "Do you want to perform the websearch again?" If you say "yes", the component will go out onto the web and retrieve all the urls that you have listed. If you say "cancel", the component will use a cached index of those sites. If you are doing multiple publishes there is no need to spend extra time going out on the web.

The only requirement WebSearch (and SiteSearch) makes is that the visitor's browser is javascript enabled.